



## PROFILE

Registered name	STUDIO LAPIS CONSERVATION PTE LTD
UEN	201415047E
Mailing address	7 Keppel Rd, #02-14/15, Tanjong Pagar Complex, Singapore 089053
Tel	(65) 6222 9640
Email	mail@studiolapis.sg
Website	www.studiolapis.sg

---

## PARTNERS & DIRECTORS

### HO Weng Hin

#### Architectural Restoration Specialist Consultant

#### Adjunct Associate Professor, NUS Dept of Architecture

Founding Chair, Docomomo Singapore Chapter

Vice President & Expert Voting Member, ICOMOS Scientific Committee for 20<sup>th</sup> Century Heritage

Founding Director, International Council on Monuments & Sites Singapore (ICOMOS Singapore)

Affiliate, Asian Academy for Heritage Management (UNESCO-ICCROM)

Specialista in Restauro dei Monumenti (cum laude) [University of Genoa, Italy]

Master of Architecture; Bachelor of Arts (Architectural Studies) [NUS]

### TAN Kar Lin

#### Architectural Heritage Research Consultant

Founding Exco Member, Docomomo Singapore Chapter

Founding Director, International Council on Monuments & Sites Singapore (ICOMOS Singapore)

Master of Arts (Architecture) degree by research [NUS]

Master of Architecture; Bachelor of Arts (Architectural Studies) [NUS]

## OVERVIEW

STUDIO LAPIS is an award-winning architectural restoration and research consultancy based in Singapore.

**SERVICES** Studio Lapis undertakes full-scope architectural conservation consultancy as well as pre-conservation survey, tender consultancy, material-specific restoration, and laboratory test report evaluation. We specialise in historic architectural materials and construction systems, ensuring the appropriate and effective use of restoration techniques and conservation methods on fragile building fabric.

**APPROACH** Our conservation approach emphasizes thorough research and investigation on the historic building, including its constructional, historical, artistic, cultural, technological and material attributes. This establishes a solid knowledge base that informs decision-making and cost analysis in the complex process of architectural conservation. It enables consultants to make the best use of design opportunities in the historic edifice that may not be immediately apparent. We work closely with the client, architect, contractor and other consultants to conserve the materiality and character of historic architecture, ensuring the continuity of these unique qualities in the building's new lease of life.

**RESEARCH** The partners of Studio Lapis each has two decades of specialised research experience in architectural history, bringing to conservation projects their skills in archival research, investigation, and analysis. As part of the firm's ongoing research and development, the partners are working on a publication project on the early Modern Architecture of Singapore from the 1920s-1970s, covering extensive groundwork on colonial to independence period Modernist structures including Kallang Airport, Tanjong Pagar Railway Station, former Supreme Court, Singapore Conference Hall and so on.

**HO WENG HIN**

Architectural Conservation Specialist

Director, STUDIO LAPIS

Adjunct Associate Professor, NUS Dept of Architecture

Specialista in Restauro dei Monumenti (cum laude) [University of Genoa, Italy, 2008]

Master of Architecture [NUS, 2001];

Bachelor of Architectural Studies [NUS, 1998]

**Nationality** Singapore Citizen  
**Email** howh@studiolapis.sg

## Expertise

- Architectural restoration techniques
- Deterioration diagnostics of historic building materials
- Field survey and documentation of heritage sites
- Historic construction technology
- Heritage Impact Assessment
- Conservation Management Plan
- Conservation project planning & management
- Adaptive reuse design and feasibility studies
- 20<sup>th</sup> Century Built and Landscapes Heritage

## Professional Membership &amp; Public Service

- Bureau Vice President, ICOMOS International Scientific Committee for 20<sup>th</sup> Century Heritage (2024-26)
- Founding Chair, Docomomo Singapore Chapter (2021 – present)
- Founding Director, International Council on Monuments & Sites (ICOMOS) Singapore National Committee (2014 – present)
- Affiliate, Asian Academy for Heritage Management (UNESCO-ICCROM)
- Member, NHB Carbon Calculator Advisory Panel (2024 – present)
- Member, Singapore Architectural Collection Technical Panel (2023 – present)
- Member, URA Heritage and Identity Partnership (2018 – present)
- Member, URA Conservation Guidelines Review Panel (2010 - present)
- Member, URA Architectural Heritage Awards Jury Panel (2009-2012)
- Member, MND Rail Corridor Partnership (2011- present)
- Member, Singapore Heritage Society (Exco Member 2004 – 2005)

## Awards &amp; Grants

2022	<b>URA Architectural Heritage Award for Conservation and Innovation (Distinction)</b> – St James Power Station
2022	<b>Singapore Institute of Architects Design Award</b> – St James Power Station
2022	<b>URA Architectural Heritage Award for Conservation</b> – Raffles Hotel
2020	<b>Singapore Institute of Architects Design Award</b> – Raffles Hotel
2018	<b>URA Architectural Heritage Award Special Mention</b> – Sophia Hills Development
2017	<b>UNESCO Asia Pacific Awards for Cultural Heritage Conservation (Honourable Mention)</b> – Cathedral of the Good Shepherd
2017	<b>URA Architectural Heritage Award for Restoration</b> – Cathedral of the Good Shepherd
2016	<b>URA Architectural Heritage Award for Restoration &amp; Innovation</b> – Capitol Development
2016	<b>URA Architectural Heritage Award Special Mention</b> – South Beach Development
2011	<b>Mubin Sheppard Memorial Prize</b> , Cycle 9 for "Conservation Area Study" category, awarded by Badan Warisan Malaysia (with NUS Dept of Architecture)
2011	<b>Urban Redevelopment Authority of Singapore sponsorship</b> for KTM Built Heritage Conservation Survey undertaken by Singapore Heritage Society (With Tan Kar Lin and Lim Chen Sian, for SHS)
2005, 2007	<b>Italian Government Scholarship</b> for postgraduate specialization course in architectural restoration at the Università' degli Studi di Genova, Italy

- 2004 **Urban Redevelopment Authority of Singapore Architecture and Urban Design Excellence Grant** for book project *Our Modern Past: Modern Architecture in Singapore 1920s – 70s*, to be published by Singapore Heritage Society (With Dinesh Naidu and Tan Kar Lin, for SHS)
- 2004 **Singapore International Foundation & Lee Foundation Grant** for conference presentation at *VIIIth DOCOMOMO International Conference, 26<sup>th</sup> Sep – 2 Oct 2004*; Columbia University, New York City (with Dinesh Naidu and Tan Kar Lin).
- 2002 **National Heritage Board (Singapore) Research and Curatorial Grant** for improving the National Archives Building Plans Collection (With Tan Kar Lin)
- 1996 **Dean's List Award** for outstanding academic performance, Faculty of Architecture, Building and Real Estate, National University of Singapore

## Professional Experience

- 2024 – present **Adjunct Associate Professor, Dept of Architecture, National University of Singapore**
- 2020 – 2023 **Adjunct Asst Professor, Dept of Architecture, National University of Singapore**
- 2013 – 2017, **Adjunct Senior Lecturer, Dept. of Architecture, National University of Singapore**
- 2018 – 2019
- 2010 - 2012 **Adjunct Lecturer, Dept. of Architecture, National University of Singapore**
- 2009 - present **Partner & Director, Studio Lapis/ Studio Lapis Conservation Pte Ltd**
- 2008 - 2009 **Architectural Restoration Specialist Consultant**
- 2004 - 2007 **Editor, *Singapore Architect Journal*, Singapore Institute of Architects**
- 2002 - 2003 **Research Assistant, Department of Architecture, National University of Singapore**
- 2000 - 2002 **Editor, *Singapore Architect Journal*, Singapore Institute of Architects**
- 2000 - 2001 **Junior Research Assistant, Department of Architecture, National University of Singapore**
- 1998 - 1999 **Architectural Assistant, William Lim Associates Pte, Singapore.**

## Selected Projects

- 2023 – ongoing **Architectural conservation specialist consultancy for former Attorney General's Chambers (National Monument), for Parliament of Singapore**
- 2023 – ongoing **Architectural conservation specialist consultancy for Batu Gajah Hospital, Malaysia, for ThinkCity and UEM**
- 2023 – ongoing **Architectural conservation feasibility study on historic structures at the Old Police Academy, for Housing Development Board**
- 2023 – ongoing **Architectural conservation specialist consultancy for Sultan Mosque, (National Monument), for Sultan Mosque Board of Trustees**
- 2022 – ongoing **Architectural conservation specialist consultancy for Golden Mile Complex, for Perennial Holdings and Far East Organisation**
- 2022 – ongoing **Architectural conservation specialist consultancy for Temasek Shophouse Extension, for Temasek Trust**
- 2021 – 2022 **Architectural heritage advisory for OCBC Centre for OCBC Properties Pte Ltd**
- 2021 – 2022 **Architectural heritage advisory for Lau Pa Sat (Telok Ayer Market) rebranding, for Fairprice Group**
- 2021 – ongoing **Architectural conservation specialist consultancy for Central Mall SDI, for City Developments Ltd**
- 2021 – 2022 **Consultancy Services for Heritage Research Study, for Urban Redevelopment Authority of Singapore**
- 2019 – 2024 **Architectural conservation specialist consultancy for former Kallang Airport and Hangar, for Singapore Land Authority**
- 2019 – ongoing **Architectural conservation specialist consultancy for Cairnhill Road Bungalow, for Low Keng Huat (Singapore) Ltd**
- 2018 – 2022 **Architectural conservation specialist consultancy for former Tanjong Pagar Railway Station, for Singapore Land Authority**
- 2018 – 2021 **Architectural conservation specialist consultancy for restoration of Church of St Teresa, for Church of St Teresa**
- 2017 – ongoing **Architectural conservation specialist consultancy for Additions & Alterations to Singapore Art Museum, for Ministry of Culture, Community and Youth**
- 2017 – 2022 **Architectural conservation specialist consultancy for State-owned historic properties, for Singapore Land Authority**
- 2017 – 2022 **Architectural conservation specialist consultancy for former St James Power Station, for Mapletree Holdings Ltd (Base Build) and Dyson Ltd (Interior Fit Out)**

- 2016 – 2019 **Architectural conservation specialist consultancy for redevelopment former Traffic Police HQ (Maxwell Chambers Suites), for Ministry of Law, Singapore.**
- 2016 - 2022 **Conservation and adaptive reuse specialist consultancy for Halic Tersane, Istanbul, Turkey, for Sembol-Ekopark İnşaat-Fine Otelcilik JV**
- 2016 – 2018 **Architectural conservation specialist consultancy for Yangon Central Railway Station Redevelopment RFP, for Yoma Strategic Holdings, Ltd.**  
*Finalist Team: Aedas – Arup Singapore – Ramboll Atelier Dreiseitl*
- 2014 - ongoing **Architectural conservation specialist consultancy and impact studies on historic buildings affected by Circle Line Stage 6, for Land Transport Authority**
- 2013 - 2019 **Architectural conservation specialist consultancy for Raffles Hotel, for Katara Hospitality Ltd.**
- 2013 - 2018 **Architectural conservation specialist consultancy for former MGS Olson Building, Trinity Theological College Chapel, and Nan Hwa Girls' School, Singapore, for Hoi Hup Sunway Mount Sophia Pte. Ltd.**
- 2013 - 2020 **Architectural conservation specialist consultancy for former Myanmar Railways Building, Yangon, Myanmar, for Peninsula Yangon Ltd.**
- 2012 - 2017 **Architectural conservation specialist consultancy for Cathedral of the Good Shepherd, Singapore, for Cathedral of the Good Shepherd.**
- 2011 - 2015 **Architectural conservation specialist consultancy for Capitol Building, Theatre and Stamford House, Singapore, for Architects 61.**
- 2009 - 2015 **Architectural conservation of former military complex and NCO Club at Beach Road, Singapore (South Beach Development), for South Beach Consortium Pte Ltd.**
- 2008-09 **Façade restoration (artificial stone) for the former Victoria School building (People's Association HQ Project) for Singapore Piling & Civil Engineering Pte Ltd.**
- 2007-08 **Documentation, Analysis and Conservation Guidelines for the Former Supreme Court Building Singapore (with School of Specialization in Restoration of Monuments, Genoa, submitted to MICA and PMB for use in National Art Gallery Project).**

**TAN KAR LIN**

Architectural Heritage Research Specialist  
Director, STUDIO LAPIS

Master of Arts (Architecture) [NUS, 2004]  
Master of Architecture [NUS, 2001]  
Bachelor of Architectural Studies [NUS, 1998]

**Nationality** Singapore Citizen  
**Email** mail@studiolapis.sg

## Expertise

- Archival research and analysis
- Colonial and modernist architectural heritage in Singapore
- Place history and urban culture
- Built heritage documentation and evaluation
- Adaptive reuse architectural design
- Modern Architecture, Sites and Landscapes

## Professional Membership &amp; Civil Society Involvement

- Founding Exco Member, Docomomo Singapore Chapter
- Founding Director, ICOMOS Singapore
- Associate Member, Singapore Institute of Architects
- Member, Singapore Heritage Society (Exco Member 2004 – 2005)

## Awards &amp; Grants

2022	<b>URA Architectural Heritage Award for Conservation and Innovation (Distinction)</b> – St James Power Station
2022	<b>Singapore Institute of Architects Design Award</b> – St James Power Station
2022	<b>URA Architectural Heritage Award for Conservation</b> – Raffles Hotel
2020	<b>Singapore Institute of Architects Design Award</b> – Raffles Hotel
2018	<b>URA Architectural Heritage Award Special Mention</b> – Sophia Hills Development
2017	<b>UNESCO Asia Pacific Awards for Cultural Heritage Conservation (Honourable Mention)</b> – Cathedral of the Good Shepherd
2017	<b>URA Architectural Heritage Award for Restoration</b> – Cathedral of the Good Shepherd
2016	<b>URA Architectural Heritage Award for Restoration &amp; Innovation</b> – Capitol Development
2016	<b>URA Architectural Heritage Award Special Mention</b> – South Beach Development
2014	<b>NHB Heritage Project Grant</b> for book project <i>Our Modern Past: Modern Architecture in Singapore 1920s – 70s</i>
2004	<b>URA Architecture and Urban Design Excellence Grant</b> for book project <i>Our Modern Past: Modern Architecture in Singapore 1920s – 70s</i>
2002	<b>National Heritage Board (Singapore) Research and Curatorial Grant</b> for improvement of the National Archives Building Plans Collection.
2001-03	<b>National University of Singapore Research Scholarship</b> for MA(Arch) by Research degree at the Centre for Advanced Studies in Architecture, NUS.

## Professional Experience

2009 - present	<b>Partner &amp; Director, Studio Lapis</b>
2008-2009	<b>Architectural Heritage Research Consultant</b>
2004 - 2007	<b>Editor &amp; Chinese Editor, Singapore Architect Journal</b> , Singapore Institute of Architects
2003	<b>Teaching Assistant</b> , Department of Architecture, National University of Singapore
2000 - 2002	<b>Editor, Singapore Architect Journal</b> , Singapore Institute of Architects
2000 - 2001	<b>Junior Research Assistant</b> , Department of Architecture, National University of Singapore
1998 - 1999	<b>Architectural Assistant</b> , Point Architects, Singapore.

## Selected Projects

2023 – ongoing	Architectural heritage consultancy for <b>City Terminals</b> , for Urban Redevelopment Authority
2022 – ongoing	<b>Architectural conservation specialist consultancy for Golden Mile Complex</b> , for Perennial Holdings and Far East Organisation
2021 – 2022	<b>Consultancy Services for Heritage Research Study</b> , for Urban Redevelopment Authority of Singapore
2021 – ongoing	<b>Architectural conservation specialist consultancy for historic state-owned properties and structures in Singapore</b> , for National Parks Board, Singapore
2018 – 2020	<b>Architectural conservation specialist consultancy for NHB Museums</b> , for National Heritage Board
2017 – 2021	<b>Chief Editor &amp; Expert Contributor, Conservation Technical Handbook Series: A Guide to Best Practices</b> , for Urban Redevelopment Authority & ICOMOS Singapore
2017 – 2021	<b>Architectural conservation specialist consultancy for State-owned historic properties</b> , for Singapore Land Authority
2016 - 2017	<b>Research Study and Conservation Management Plan for Haw Par Villa, Singapore</b> for National Heritage Board Singapore
2015	<b>Architectural conservation specialist for Singapore Rail Corridor RFP</b> , for Urban Redevelopment Authority Singapore <i>Finalist Team: Office of Metropolitan Architects – OLIN – DP Architects</i> <i>Finalist Team: MVRDV – Grant Associates – Architects 61</i>
2014 - ongoing	<b>Architectural conservation specialist consultancy and impact studies on historic buildings affected by infrastructural development</b> , for Land Transport Authority
2013 - 2018	<b>Architectural conservation specialist consultancy for former MGS Olson Building, Trinity Theological College Chapel, and Nan Hwa Girls' School, Singapore</b> , for Hoi Hup Sunway Mount Sophia Pte. Ltd.
2013 - 2020	<b>Architectural conservation specialist consultancy for former Myanmar Railways Building, Yangon, Myanmar</b> , for Peninsula Yangon Ltd.
2012 - 2017	<b>Architectural conservation specialist consultancy for Cathedral of the Good Shepherd, Singapore</b> , for Cathedral of the Good Shepherd.
2011 - 2015	<b>Historiography documentation of the restoration of Victoria Theatre and Victoria Concert Hall, Singapore</b> , for MICA/ NAC
2011 - 2015	<b>Architectural conservation specialist consultancy for Capitol Building, Theatre and Stamford House, Singapore (URA Land Sales redevelopment)</b> , for Architects 61.
2011-12	<b>Built heritage documentation and evaluation of Singapore railway landscapes, structures and artefacts</b> , for Singapore Heritage Society, submitted to MND and URA.
2009 - 2015	<b>Architectural conservation of former military complex and NCO Club at Beach Road, Singapore (South Beach Development)</b> , for South Beach Consortium Pte Ltd.
2013	<b>Author &amp; Researcher, Architectural Monograph on Sonny Chan S Y.</b>
2005-07	<b>Editor, Singapore Architect Journal #225 – 237</b> , Singapore Institute of Architects.
2004 - 2014	<b>Author &amp; Researcher (With Ho Weng Hin and Dinesh Naidu), Our Modern Past: Modern Architecture in Singapore 1920s – 70s</b> , Singapore: Singapore Heritage Society, in 2 Vols.
2001-04	<b>The 'Worlds' Entertainment Parks of Singapore (1920s-1980s): New Urban Form and Social Space for Culture and Consumption</b> (Academic dissertation for MA(Arch) degree, NUS, Supervisor: Dr Wong Yunn Chii).

## ARCHITECTURAL CONSERVATION PORTFOLIO

---



<i>Year</i>	2006
<i>Site</i>	<b>Former Supreme Court (1939) &amp; former City Hall (1928)</b>
<i>Building Type</i>	Neo-classical institutional buildings (steel, RC and masonry structure)
<i>Project</i>	Initial Conservation Assessment for the National Art Gallery Project (Singapore) in collaboration with NUS Department of Architecture
<i>Scope</i>	<b>State of conservation survey &amp; report</b>
<i>Client</i>	MICA Art Gallery Project Unit (AGPU)

### \* National Monuments

---



<i>Year</i>	2006 – 2007
<i>Site</i>	<b>Former Church of S. Bartolomeo dell'Olivella, Genoa, Italy (14<sup>th</sup> C)</b>
<i>Building Type</i>	Medieval religious building (masonry & timber structure)
<i>Project</i>	Architectural Conservation Survey and Adaptive Re-use Proposal
<i>Scope</i>	<ul style="list-style-type: none"> <li>• <b>Materials and deterioration assessment</b> for natural stone, lime plaster, fresco painting, timber, iron, copper etc.</li> <li>• <b>Non-invasive site investigation</b> incl. IR thermography, magnetometry etc.</li> <li>• <b>Material sampling and laboratory test analyses</b> incl. petrographic-minerological analysis, SEM-EDS, FTIR</li> </ul>
<i>Client</i>	Ministry of Cultural Assets, Ligurian Bureau, Italy (with the University of Genoa, Italy)

---



<i>Year</i>	2006 – 2008
<i>Site</i>	<b>Former Supreme Court, Singapore (1939)</b>
<i>Building Type</i>	Neoclassical institutional building (steel, RC & masonry structure)
<i>Project</i>	Specialisation Thesis submitted to MICA and PMB for use in NAG Project
<i>Scope</i>	<ul style="list-style-type: none"> <li>• <b>Architectural conservation documentation analysis &amp; guidelines</b></li> <li>• <b>Materials and deterioration assessment</b> for artificial stone facades, terrazzo finishes, plasterwork, rubber tiling etc.</li> <li>• <b>Material sampling and laboratory test analyses</b> incl. petrographic-minerological analysis, SEM-EDS, FTIR, tests for soluble salts, carbonation of artificial stone finishes</li> <li>• <b>Restoration specification and techniques</b> for artificial stone and terrazzo</li> </ul>

### \* National Monument

---



*Year* 2008 – 2009  
*Site* **54 & 56 Heeren Street, Malacca, Malaysia (Late 18 C & 1930s)**  
*Building Type* Dutch & British colonial terraced townhouses (masonry & timber structure)  
*Project* Architectural Conservation and Adaptive Re-use for NUS-DOA Tun Tan Cheng Lock Centre for Asian Built Heritage Research and Conservation  
*Scope*

- **Materials and deterioration assessment** for brick masonry, lime plaster, mineral paintwork and metallic elements
- **Non-invasive site investigation** incl. IR thermography

*Client* NUS Department of Architecture

**\* Restoration Project in UNESCO World Heritage Site**

---



*Year* 2008 – 2009  
*Site* **Former Victoria School, Singapore (1933)**  
*Building Type* Art Deco/ Modernist institutional building (RC & masonry structure)  
*Project* Adaptive Re-use & Extension for People’s Association HQ  
*Scope*

- **Materials and deterioration assessment** for artificial stone facades
- **Interpretation of laboratory test analyses** incl. petrographic-minerological analysis, fluorescent microscopy
- **Conservation specifications, trial mock-ups and site supervision** for restoration of artificial stone facades

*Client* Singapore Piling and Engineering Pte Ltd  
*Architect* Architects 61 Pte Ltd

**\* Winner of URA Architectural Heritage Awards 2009**

---



*Year* 2009  
*Site* **Hong San See Temple, Singapore (1913)**  
*Building Type* Southern Chinese religious building (*Minnan* traditional timber and stone structure)  
*Project* Restoration of National Monument  
*Scope*

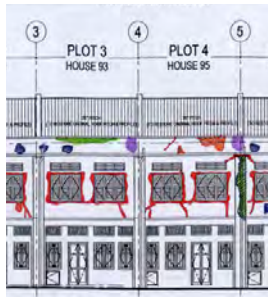
- **Materials and deterioration assessment** for natural stone stelae
- **Conservation specifications, trial mock-ups and restoration cleaning** for natural stone stelae

*Client* Preservation of Monuments Board, Singapore

**\* UNESCO Asia Pacific Awards for Cultural Heritage Conservation 2010 - Award of Excellence**

---





*Year* 2009  
*Site* 9 Units Conservation Shophouses, Joo Chiat, Singapore (1940s-50s)  
*Building Type* Art Deco/ Modernist terraced shophouses (RC & masonry structure)  
*Project* Heritage 9 Development (Adaptive Re-use and New Extension)  
*Scope*

- **Materials and deterioration assessment** for artificial stone facades
- **Conservation specifications, trial mock-ups and site supervision** for restoration of artificial stone facades

*Client* Soil-Build Pte Ltd  
*Architect* AGA Architects Pte Ltd



*Year* 2010, 2012  
*Site* 157 Neil Road, Singapore (1890s)  
*Building Type* Peranakan terraced townhouse (loadbearing masonry and timber structure)  
*Scope*

- **Materials and deterioration assessment** for lime plaster and ornamentation
- **Trial mock-ups, restoration cleaning, biocide treatment and consolidation** of lime plaster and ornamentation

*Client* NUS Museums, National University of Singapore



*Year* 2009 – 2011  
*Site* St. George's Church, Georgetown, Penang, Malaysia (1818)  
*Building Type* Georgian Neo-classical religious building (masonry & timber structure)  
*Project* Restoration of National Monument  
*Scope*

- **Architectural conservation documentation analysis & guidelines**
- **Materials and deterioration assessment** for brick masonry, lime plaster, paintwork, stone, terrazzo, timber and metallic finishes
- **Interpretation of laboratory test analyses** incl. petrographic-minerological analysis
- **Restoration specification and techniques**

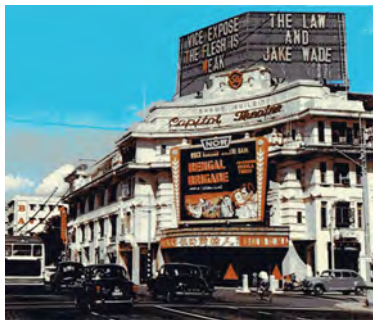
*Architect* East Design Architects Sdn Bhd

\* National Monument (Malaysia) in UNESCO World Heritage Site



<i>Year</i>	2009 – 2015
<i>Site</i>	Former military complex & NCO Club at Beach Road, Singapore (1930s-50s)
<i>Building Type</i>	Modernist military/ institutional buildings (RC & masonry structure)
<i>Project Scope</i>	South Beach Development, Singapore <ul style="list-style-type: none"> <li>• Architectural conservation documentation, analysis &amp; guidelines</li> <li>• Architectural design review for conservation buildings</li> <li>• Materials and deterioration assessment.</li> <li>• Restoration specification and techniques</li> <li>• Construction stage specialist consultancy</li> </ul>
<i>Client</i>	South Beach Consortium Pte Ltd
<i>Design</i>	Foster and Partners (UK)
<i>Architect</i>	Aedas Pte Ltd

\* URA Architectural Heritage Awards 2016 – Special Mention

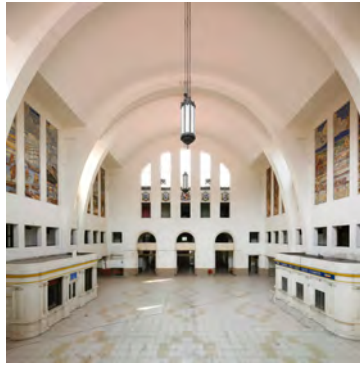


<i>Year</i>	2010
<i>Site</i>	Capitol Building & Theatre (1930); Stamford House (1906)
<i>Building Type</i>	Neoclassical recreational/ residential (RC/ steel/ timber structures)
<i>Project Scope</i>	URA Land Sales for redevelopment (Pre-bid stage) <ul style="list-style-type: none"> <li>• Architectural conservation initial survey and assessment</li> <li>• Archival building plans and historical research</li> </ul>
<i>Client</i>	Valparaiso Singapore Pte Ltd/ Gaw Capital
<i>Design</i>	Herzog & de Meuron (Switzerland)
<i>Architect</i>	Aedas Pte Ltd

\* One of three finalists in URA Land Sales Two-Envelope competitive bid

<i>Year</i>	2011 – 2015
<i>Site</i>	Capitol Building & Theatre (1930); Stamford House (1906)
<i>Building Type</i>	Neoclassical recreational/ residential (RC/ steel/ timber structures)
<i>Project Scope</i>	URA Land Sales for redevelopment <ul style="list-style-type: none"> <li>• Architectural conservation documentation, analysis &amp; guidelines</li> <li>• Architectural design review for conservation buildings</li> <li>• Materials and deterioration assessment</li> <li>• Restoration specification and techniques</li> <li>• Construction stage specialist consultancy</li> </ul>
<i>Client</i>	Architects 61 Pte Ltd
<i>Design</i>	Richard Meier & Partners LLP (USA)
<i>Architect</i>	Architects 61 Pte Ltd

\* URA Architectural Heritage Awards 2016 – Award for Restoration & Innovation



<i>Year</i>	2011 – 2012
<i>Site</i>	<b>Singapore railway land (former KTM railway) (1903-70s)</b>
<i>Building Type</i>	Art Deco/ Modernist transport, infrastructure and ancillary buildings (RC & brick masonry structure)
<i>Project</i>	Singapore Railway Heritage Survey & Documentation (Rail Corridor Project)
<i>Scope</i>	<ul style="list-style-type: none"> <li>• <b>Built Heritage Survey</b> of former train stations, engineering, residential and other structures</li> <li>• <b>Photo-documentation and mapping</b> of railway heritage landscapes, structures and artefacts</li> </ul>
<i>Client</i>	Singapore Heritage Society

\* National Monument (former Tanjong Pagar Railway Station)



<i>Year</i>	2012 – 2015
<i>Site</i>	<b>Victoria Concert Hall and Theatre, Singapore (1905)</b>
<i>Building Type</i>	Neo-classical institutional building (loadbearing masonry, steel and timber structure)
<i>Scope</i>	<ul style="list-style-type: none"> <li>• <b>Archival research and oral history</b></li> <li>• <b>Construction and historiography documentation</b> by videography and photography</li> </ul>
<i>Client</i>	Ministry of Information, Communication and the Arts Singapore (MICA)
<i>Architect</i>	W Architects

\* National Monument



<i>Year</i>	2012 – 2016
<i>Site</i>	<b>Cathedral of the Good Shepherd, Singapore (1846)</b>
<i>Building Type</i>	Neo-classical religious building (masonry & timber structure)
<i>Project</i>	Additions & Alterations to National Monument
<i>Scope</i>	<ul style="list-style-type: none"> <li>• <b>Archival research and conservation survey</b></li> <li>• <b>Materials and deterioration assessment</b> for brick masonry, lime plaster, paintwork, stone, timber and metal</li> <li>• <b>Restoration specification and techniques</b></li> <li>• <b>Construction stage specialist consultancy</b></li> </ul>
<i>Client</i>	Cathedral of the Good Shepherd
<i>Architect</i>	Architects 61 Pte Ltd

\* National Monument

\* UNESCO Asia Pacific Awards for Cultural Heritage Conservation 2017 - Honourable Mention

\* URA Architectural Heritage Awards 2017 – Award for Restoration



*Year* 2013 - 2020  
*Site* Former Myanmar Railways Building, Yangon, Myanmar (1870s)  
*Building Type* Victorian-era institutional building (masonry & timber structure)  
*Project* The Peninsula Yangon/ Landmark Project  
*Scope*

- Architectural heritage survey
- Dilapidation and tactile survey
- Conservation design consultancy
- Restoration specifications and techniques

*Client* Peninsula Yangon Limited  
*Architect* Aedas Pte Ltd

#### \* Yangon Heritage Listed Building

---



*Year* 2013 - 2018  
*Site* Former MGS Olson Building (1928), Trinity Theological College Chapel (1968), Nan Hwa Girls' School (1941)  
*Building Type* Early modern institutional building, postwar modern church (masonry & RC structures)  
*Project* Mount Sophia development  
*Scope*

- Architectural heritage survey
- Architectural design review for conservation buildings
- Materials and deterioration assessment
- Restoration specification and techniques
- Construction stage specialist consultancy

*Client* Hoi Hup Sunway Mount Sophia Pte Ltd  
*Architect* Consortium 168 Pte Ltd

#### \* URA Architectural Heritage Awards 2018 – Special Mention

---



*Year* 2013 - 2019  
*Site* Raffles Hotel (1889-1907) (Raffles Arcade - 1989)  
*Building Type* Hotel compound with buildings in various colonial revivalist styles (masonry & timber structure)  
*Project* Renovation Works to Raffles Hotel  
*Scope*

- Architectural heritage survey & design review
- Materials and deterioration assessment
- Restoration specification and techniques
- Construction stage specialist consultancy

*Client* Katara Hospitality  
*Architect* Aedas Pte Ltd

#### \* National Monument

\* Singapore Institute of Architects Design Award 2020 (Special Category)

\* URA Architectural Heritage Award (Conservation) 2020

---



*Year* 2014  
*Site* **Former Catholic High School (1951)**  
*Building Type* Art Deco/ Modernist institutional building (RC structure)  
*Project* Feasibility Studies on A&A to Singapore Art Museum  
*Scope*

- Initial conservation site survey
- Architectural heritage research
- Conservation design review

*Client* National Heritage Board  
*Architect* W Architects Pte Ltd



*Year* 2014 - 2018  
*Site* **St George's Church (1911)**  
*Building Type* Arts & Crafts movement religious building (fairfaced brick masonry structure)  
*Project* Conservation Maintenance and Phased Restoration  
*Scope*

- Condition assessment and materials investigation
- Long-term maintenance and restoration plan
- PSM Monuments Grant application
- Construction stage project management

*Client* St George's Church Council

\* National Monument

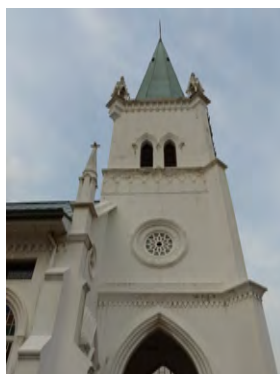


*Year* 2014 - ongoing  
*Site* **Southern Singapore**  
*Building Type* Various (20<sup>th</sup> C. brick masonry, timber and RC structures)  
*Project* Impact Studies on Historic Buildings Affected by Infrastructural Development including former Tg Pagar Railway Station  
*Scope*

- Architectural Heritage Survey
- Building Condition Assessment
- Impact Study & Mitigation

*Client* Land Transport Authority

\* National Monument



*Year* 2015  
*Site* **Church of the Nativity of the Blessed Virgin Mary (1901)**  
*Building Type* Neo-Gothic religious building (partial brick masonry and RC structure)  
*Project* Architectural Restoration of National Monument  
*Scope*

- Condition assessment and materials investigation
- Scope of restoration work
- PSM Monuments Grant application

*Client* Church of the Nativity of the Blessed Virgin May

\* National Monument



*Year* 2016 - 2021  
*Site* **Halic Tersane, Istanbul, Turkey (1700s – 1980s)**  
*Building Type* Brick, masonry, timber, RC and steel workplace buildings (Ottoman and Republic eras)  
*Project Scope* Conservation & Mixed Use Redevelopment  
 • **Conservation Design and Adaptive Reuse**  
 • **Initial Condition Assessment / Restoration Strategies**  
*Client* Sembol-Ekopark İnşaat-Fine Otelcilik JV  
*Designer* DP Architects Pte Ltd



*Year* 2016 - 2019  
*Site* **Former Traffic Police HQ Building, Singapore (1930)**  
*Building Type* Stripped Classicism/ institutional/ barracks - offices  
*Project Scope* Maxwell Chambers Suites  
 • **Architectural heritage survey**  
 • **Conservation design analysis and input**  
 • **Conservation technical specifications**  
 • **Construction stage specialist consultancy**  
 • **Heritage Interpretation**  
*Client* Ministry of Law, Singapore  
*Architect* W Architects Pte Ltd

\* BCA Design & Engineering Safety Award 2020



*Year* 2016 – 2017  
*Site* **Haw Par Villa, Singapore (1930s – 70s)**  
*Building Type* Landscape gardens with structures, statuary and tableau  
*Project Scope* Research Study on Haw Par Villa  
 • **Archival and bibliographical research**  
 • **Field studies and materials testing**  
 • **Documentation and condition assessment**  
 • **Conservation Management Plan**  
*Client* National Heritage Board, Singapore



*Year* 2016 - 2021  
*Site* **Church of St Teresa (1929)**  
*Building Type* Romano-Byzantine influenced religious building (RC Structure)  
*Project Scope* Architectural Restoration of National Monument  
 • **Architectural Heritage & Dilapidation Survey**  
 • **PSM Monuments Grant Application**  
 • **Conservation Design & Tender Stage**  
 • **Construction Stage Specialist Consultancy**  
*Client* Church of St Teresa

\* National Monument



*Year* 2016 - 2018  
*Site* **Ellison Building, Singapore (1925)**  
*Building Type* Art Deco/ Shophouses (loadbearing masonry and timber structure)  
*Project* Conservation Study & Investigation Associated with Construction of North South Corridor  
*Scope*

- **Architectural heritage survey**
- **Heritage impact assessment**
- **Conservation technical specifications**

*Client* Land Transport Authority, Singapore  
*Engineer* Arup Singapore



*Year* 2017  
*Site* **Ben Thanh Market, Ho Chi Minh City, Vietnam (1914)**  
*Building Type* Fresh and dry goods market building (Ferroconcrete structure)  
*Project* Conservation & Redevelopment Concept Masterplan  
*Scope*

- **Architectural Heritage Survey Report**

*Client* Tien Phuoc Real Estate JSC  
*Architect* DP Architects Pte Ltd



*Year* 2017 - 2021  
*Site* **Historic State-owned properties in Singapore (1890s – 1950s)**  
*Building Type* Former government bungalows and staff quarters (Brick masonry/ timber/ RC/ steel structures)  
*Project* Architectural Conservation Specialist Consultancy  
*Scope*

- **Built Heritage Survey & Assessment**
- **Detailed Conservation Investigation**
- **Conservation Management Plan**

*Client* Singapore Land Authority



*Year* 2017 - Ongoing  
*Site* **Former St Josephs' Institution (1870s) & Catholic High School (1950s)**  
*Building Type* Missionary school buildings adapted as contemporary art museums (Brick masonry/ RC structures)  
*Project* Additions & Alterations to Singapore Art Museum  
*Scope*

- **Architectural heritage survey**
- **Conservation design analysis and input**
- **Conservation technical specifications**
- **Construction stage specialist consultancy**

*Client* Ministry of Culture, Community & Youth  
*Architect* SCDA Architects

\* National Monument



*Year* 2017 - 2022  
*Site* **Former St James Power Station (1928)**  
*Building Type* Industrial building (Steel structure and fairfaced brick facades)  
*Project Scope* Redevelopment of St James Power Station  
 • **Architectural heritage survey**  
 • **Conservation design analysis and input**  
 • **Conservation technical specifications**  
 • **Construction stage specialist consultancy**  
 • **Heritage interpretation + curatorial**  
*Client* Mapletree Holdings Ltd (Base-Build)  
*Architect* W Architects Pte Ltd  
  
*Client* Dyson Ltd (Interior Fit Out)  
*Designer* M Moser Associates

\* National Monument

\* URA Architectural Heritage Award (Conservation and Innovation – Distinction) 2022

\* Singapore Institute of Architects Design Award (Special Category) 2022



*Year* 2018 - 2024  
*Site* **Former Beach Road Police Station, Singapore (1933)**  
*Building Type* Police station/ offices and quarters (RC structure)  
*Project Scope* Beach Road Mixed Development  
 • **Architectural heritage survey**  
 • **Conservation design analysis and input**  
 • **Conservation technical specifications**  
 • **Heritage interpretation + curatorial**  
 • **Construction stage specialist consultancy**  
*Client* GuocoLand Ltd  
*Designer* Denton Corker Marshall  
*Architect* DP Architects



*Year* 2018 - 2023  
*Site* **Jiak Kim Street Godowns, Singapore (1910s-20s)**  
*Building Type* Industrial buildings (Load-bearing brick masonry and timber structure)  
*Project Scope* Jiak Kim Street Development  
 • **Architectural heritage survey**  
 • **Conservation design analysis and input**  
 • **Conservation technical specifications**  
 • **Heritage interpretation + curatorial**  
 • **Construction stage specialist consultancy**  
*Client* Frasers Properties Ltd  
*Designer* SCDA Architects Pte Ltd  
*Architect* P&T Architects and Engineers Ltd





*Year* 2018 - 2023  
*Site* **12 Mount Sophia, Singapore (1893)**  
*Building Type* Bungalow (Brick masonry/ timber/ structure)  
*Project* Handy Road Redevelopment  
*Scope*

- Architectural heritage survey
- Conservation design analysis and input
- Conservation technical specifications
- Heritage interpretation + curatorial
- Construction stage specialist consultancy

*Client* CDL Regulus Pte Ltd  
*Architect* Architects 61 Pte Ltd



*Year* 2018 - 2022  
*Site* **Former Tanjong Pagar Railway Station (1930)**  
*Building Type* Infrastructure/ railway terminus (RC structure, Shanghai Plaster facades)  
*Project* Architectural Conservation Specialist Consultancy  
*Scope*

- Architectural Heritage Survey
- Conservation Management Plan
- Conservation technical specifications
- Protection Works specialist consultancy

*Client* Singapore Land Authority

**\* National Monument**



*Year* 2018 - 2021  
*Site* **Former Empress Place Building (1870s – 1920s)**  
**National Museum of Singapore (1880s – 1930s)**  
**Former Tao Nan School (1906)**  
**Former Istana Kampong Glam (1843)**  
**Sun Yat Sun Villa (1901)**  
*Building Type* Institutional/ Museums (Brick masonry/ timber/ steel structures)  
*Project* Architectural Conservation Specialist Consultancy  
*Scope*

- Architectural Heritage Survey
- Conservation Management Plan

*Client* National Heritage Board Singapore

**\* National Monuments**



*Year* 2019 - ongoing  
*Site* **67 Cairnhill Road, Singapore (1902)**  
*Building Type* Bungalow (Brick masonry/ timber/ structure)  
*Project* Cairnhill Road Condominium Development  
*Scope*

- Architectural heritage survey
- Conservation design guidance
- Conservation technical specifications
- Heritage interpretation
- Construction stage specialist consultancy

*Client* Low Kheng Huat (S) Ltd  
*Architect* DP Architects Pte Ltd



*Year* 2019 - 2024  
*Site* **Former Kallang Airport and Hangars, Singapore (1937)**  
*Building Type* Civic/ Industrial (Steel/ brick masonry structure)  
*Project* Conservation and  
*Scope*

- Architectural heritage survey
- Conservation design guidance
- Conservation technical specifications
- Construction stage specialist consultancy

*Client* Singapore Land Authority  
*Architect* Zarch Collaboratives



*Year* 2019 - 2020  
*Site* **Shophouses at Stanley Street (1900s)**  
*Building Type* Terraced shophouses (loadbearing masonry and timber structure)  
*Project* Architectural Conservation Specialist Consultancy  
*Scope*

- Architectural Heritage Survey
- Conservation Technical Specifications

*Client* Taiko Properties Pte Ltd

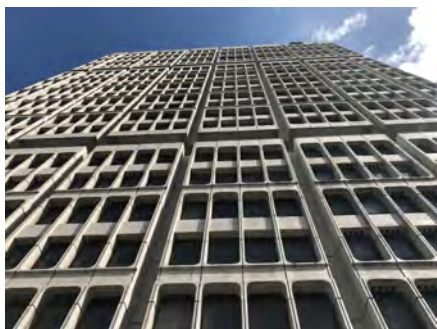


*Year* 2019 - 2021  
*Site* **National Museum of Singapore (1880s – 1930s)**  
*Building Type* Institutional/ Museum (Brick masonry/ timber/ cast iron)  
*Project* Feasibility Studies on A&A to National Museum of Singapore  
*Scope*

- Initial conservation site survey
- Architectural heritage research
- Conservation design review

*Client* National Heritage Board Singapore

\* National Monument



*Year* 2020  
*Site* **Shaw Tower (1977)**  
*Building Type* High Rise Mixed Use (RC/ steel structure with precast concrete cladding)  
*Project* Shaw Tower Heritage Studies  
*Scope*

- Façade cladding technical study
- Heritage Interpretation

*Client* Shaw Foundation  
*Architect* Aedas



*Year* 2020 – 2021  
*Site* **Mountbatten Road Bungalow (1930s)**  
*Building Type* Residential (RC and timber structure)  
*Project* Heritage Studies  
*Scope* • Architectural heritage survey  
 • Heritage Interpretation  
*Client* DSLSG Investment Co. Pte Ltd



*Year* 2020 – 2024  
*Site* **Shophouses at New Bridge Road (1934)**  
*Building Type* Terraced shophouses (loadbearing masonry and timber structure)  
*Project* Project Noble (Hotel Development)  
*Scope* • Construction Stage Specialist Consultancy  
*Client* HK Street Pte Ltd  
*Architect* WOHA Architects  
*Contractor* Sunray Woodcraft



*Year* 2020 - Ongoing  
*Site* **Alexandra Hospital (1938, 1950s – 80s)**  
*Building Type* Institutional/ Medical (RC/ Brick masonry structure)  
*Project* Phase 1: Decanting, Demolition and Improvement Works to Alexandra Hospital  
*Scope* • Architectural Heritage Desktop Research  
 • Impact Assessment & Mitigation  
 • Heritage Management Plan  
 • Construction Stage Specialist Consultancy  
*Client* MOH Holdings Pte Ltd  
*Architect* Forum Architects



*Year* 2020 - Ongoing  
*Site* **Historic State-owned properties and structures in Singapore (1850s – 1970s)**  
*Building Type* Various: former government buildings and staff quarters, military and memorial structures (Brick masonry/ timber/ RC/ steel/ cast iron)  
*Project* Architectural Conservation Specialist Consultancy  
*Scope* • Architectural Heritage Survey & Assessment  
 • Heritage Management Plan  
 • Conservation & Maintenance Consultancy  
*Client* National Parks Board

\* National Monuments



*Year* 2020 - 2021  
*Site* **Clarke Quay (1860s – 1950s)**  
*Building Type* Commercial Godowns and Shophouses (Brick masonry/ timber/ RC/ steel)  
*Project Scope* Clarke Quay Rejuvenation Feasibility Studies  
 • **Architectural Heritage Survey & Assessment**  
*Client* CapitaLand Ltd  
*Architect* Meta x Formwerkz Architects



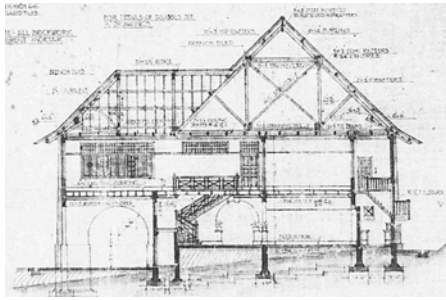
*Year* 2021 - 2022  
*Site* **Historic bungalow at Nassim Road (1906)**  
*Building Type* Former colonial staff quarters, military and memorial structures (Brick masonry/ timber/ RC/ steel/ cast iron)  
*Project Scope* Architectural Conservation Specialist Consultancy  
 • **Architectural Heritage Survey & Assessment**  
 • **Conservation & Maintenance Consultancy**  
*Client* SC Capital Partners



*Year* 2021 - Ongoing  
*Site* **Former site of Kampong Melaka (1910s – 30s)**  
*Building Type* Commercial godowns and shophouses (Brick masonry/ timber/ RC/ steel)  
*Project Scope* Central Mall SDI  
 • **Architectural heritage survey**  
 • **Conservation design guidance**  
 • **Heritage Interpretation plan**  
 • **Conservation technical specifications**  
 • **Construction stage specialist consultancy**  
*Client* City Developments Ltd  
*Architect* Aedas Singapore



*Year* 2021 – 2022  
*Site* **Former Bukit Timah Station (1953)**  
*Building Type* Civic/ Institutional (RC/ steel/ timber structure)  
*Project Scope* C40 Reinventing Cities Development  
 • **Architectural heritage survey**  
 • **Conservation design guidance**  
 • **Heritage Interpretation plan**  
 • **Conservation technical specifications**  
*Client* Homestead Holland Pte Ltd  
*Architect* Provolk Architects x Wy-To Singapore



*Year* 2021 - Ongoing  
*Site* **Historic bungalow at Chatsworth Park (1926)**  
*Building Type* Bungalow (Brick masonry/ timber structure)  
*Project* Architectural Conservation Specialist Consultancy  
*Scope*

- Architectural heritage survey
- Conservation technical specifications
- Construction stage specialist consultancy

*Client* Private Owner  
*Architect* Richardho Architects



*Year* 2021 - Ongoing  
*Site* **Former Malayan Motor Showroom, Midfilm House and tropical modern shophouses along Orchard Road (1920s – 30s)**  
*Building Type* Commercial terraced shophouses (Brick masonry/ timber/ RC/ steel)  
*Project* Temasek Shophouse Extension  
*Scope*

- Architectural heritage survey
- Conservation design guidance
- Heritage Interpretation plan
- Conservation technical specifications
- Construction stage specialist consultancy

*Client* Temasek Trust  
*Architect* Surbana Jurong



*Year* 2021 - 2022  
*Site* **OCBC Centre (1976)**  
*Building Type* High Rise Commercial/ Office Building (RC/ steel/ structure)  
*Project* Heritage Research Study  
*Scope*

- Architectural research and heritage advisory

*Client* OCBC Properties Pte Ltd



*Year* 2021 - Ongoing  
*Site* **Former Boarding House at Maude Road (1926)**  
*Building Type* Commercial shophouse (Brick masonry/ RC/ Timber)  
*Project* Adaptive reuse and conservation  
*Scope*

- Architectural heritage survey
- Heritage interpretation plan
- Conservation technical specifications
- Construction stage specialist consultancy

*Client* Clifton Partners Pte Ltd  
*Architect* Forum Architects



*Year* 2022  
*Site* **Former Tanglin Officers' Mess (1934)**  
*Building Type* Institutional (Shanghai plaster/ RC/ steel)  
*Project* Heritage Advisory for Façade Restoration  
*Scope*

- Architectural heritage survey (facades)
- Conservation recommendations
- Trial restoration consultancy

*Client* Ministry of Foreign Affairs Singapore



*Year* 2022 - 2023  
*Site* **Terraced Townhouse at Emerald Hill Road (1924)**  
*Building Type* Residential (Brick masonry/ timber)  
*Project* Heritage Advisory for Architectural Restoration  
*Scope*

- Architectural heritage and condition survey
- Conservation recommendations
- Construction stage specialist consultancy

*Client* Private Owner



*Year* 2022 - Ongoing  
*Site* **Former Telok Ayer Market (1894)**  
*Building Type* Municipal Market (Cast iron structure)  
*Project* Corporate rebranding campaign  
*Scope*

- Architectural heritage research and survey
- Heritage interpretation & curatorial
- Construction stage specialist consultancy

*Client* Fairprice Group  
*Architect* Zarch Collaboratives

\* National Monument



*Year* 2022 - Ongoing  
*Site* **Golden Mile Complex (1976)**  
*Building Type* Mixed Use (RC & steel structure/ fairfaced concrete/ tiled facades)  
*Project* Conservation and Adaptive Reuse  
*Scope*

- Architectural heritage survey
- Conservation design guidance
- Heritage interpretation plan
- Conservation technical specifications
- Construction stage specialist consultancy

*Client* Perennial Holdings  
 Far East Organisation  
*Architect* DP Architects



\* National Monument

*Year* 2023 - Ongoing  
*Site* **Sultan Mosque (1924)**  
*Building Type* Indo-Saracenic religious building (partial brick masonry and RC structure)  
*Project Scope* Architectural Restoration of National Monument  
 • Architectural heritage research and survey  
 • PSM Monuments Grant Application  
 • Conservation technical specifications  
 • Construction stage specialist consultancy  
*Client* Masjid Sultan



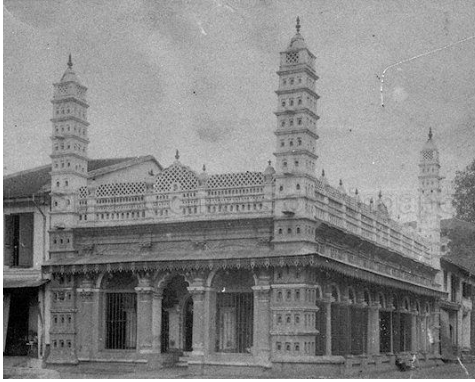
*Year* 2023 - Ongoing  
*Site* **Terraced Townhouse at Neil Road (1897)**  
*Building Type* Residential (Brick masonry/ timber)  
*Project Scope* Heritage Advisory for Architectural Restoration  
 • Architectural heritage and condition survey  
 • Conservation recommendations  
 • Construction stage specialist consultancy  
*Client* Private Owner



*Year* 2023 - Ongoing  
*Site* **Old Drill Shed at Old Police Academy (1927)**  
*Building Type* Institutional (Steel structure)  
*Project Scope* Feasibility Studies on Mount Pleasant Redevelopment  
 • Architectural heritage survey  
 • Building Condition Assessment  
 • Conservation Strategies  
*Client* Housing & Development Board



*Year* 2023  
*Site* **Arcadia Condominium (1983)**  
*Building Type* Residential (RC structure)  
*Project Scope* Heritage Assessment of Arcadia Condominium  
 • Architectural heritage survey  
 • Conservation Management Plan  
*Client* Arcadia MCST



*Year* 2023 - Ongoing  
*Site* **Nagore Dargah Indian Muslim Heritage Centre (1928)**  
*Building Type* Indo-Islamic religious building (brick masonry structure)  
*Project* Architectural Restoration of National Monument  
*Scope*

- Architectural heritage research and survey
- PSM Monuments Grant Application
- Construction stage specialist consultancy

  
*Client* ND Society

\* National Monument



*Year* 2023 - Ongoing  
*Site* **City Terminals**  
*Building Type* Various (brick masonry, timber and RC structures)  
*Project* Heritage Research Study  
*Scope*

- Architectural heritage research

  
*Client* Urban Development Authority



*Year* 2023 - Ongoing  
*Site* **Batu Gajah Hospital, Malaysia (1884)**  
*Building Type* Medical (brick masonry/ timber structure)  
*Project* Architectural Conservation Specialist Consultancy  
*Scope*

- Architectural Heritage Survey & Assessment
- Heritage Management Plan

  
*Client* ThinkCity and UEM Group  
*Architect* B.K.Ooi Akitek



*Year* 2023 - Ongoing  
*Site* **Former Attorney General's Chambers (1906)**  
*Building Type* Institutional (steel, RC and masonry structure)  
*Project* Architectural Restoration of National Monument  
*Scope*

- Architectural Heritage Survey
- Condition assessment and material investigation
- Conservation & Maintenance Consultancy

  
*Client* Parliament of Singapore

\* National Monument