



PROFILE

Registered name	STUDIO LAPIS CONSERVATION PTE LTD
UEN	201415047E
Mailing address	7 Keppel Rd, #02-14/15, Tanjong Pagar Complex, Singapore 089053
Tel	(65) 6222 9640
Email	mail@studiolapis.sg
Website	www.studiolapis.sg

PARTNERS & DIRECTORS

HO Weng Hin

Architectural Restoration Specialist Consultant

Adjunct Associate Professor, NUS Dept of Architecture

Founding Chair, Docomomo Singapore Chapter

Vice President & Expert Voting Member, ICOMOS Scientific Committee for 20th Century Heritage

Founding Director, International Council on Monuments & Sites Singapore (ICOMOS Singapore)

Affiliate, Asian Academy for Heritage Management (UNESCO-ICCROM)

Specialista in Restauro dei Monumenti (cum laude) [University of Genoa, Italy]

Master of Architecture; Bachelor of Arts (Architectural Studies) [NUS]

TAN Kar Lin

Architectural Heritage Research Consultant

Founding Exco Member, Docomomo Singapore Chapter

Founding Director, International Council on Monuments & Sites Singapore (ICOMOS Singapore)

Master of Arts (Architecture) degree by research [NUS]

Master of Architecture; Bachelor of Arts (Architectural Studies) [NUS]

OVERVIEW

STUDIO LAPIS is an award-winning architectural restoration and research consultancy based in Singapore.

SERVICES Studio Lapis undertakes full-scope architectural conservation consultancy as well as pre-conservation survey, tender consultancy, material-specific restoration, and laboratory test report evaluation. We specialise in historic architectural materials and construction systems, ensuring the appropriate and effective use of restoration techniques and conservation methods on fragile building fabric.

APPROACH Our conservation approach emphasizes thorough research and investigation on the historic building, including its constructional, historical, artistic, cultural, technological and material attributes. This establishes a solid knowledge base that informs decision-making and cost analysis in the complex process of architectural conservation. It enables consultants to make the best use of design opportunities in the historic edifice that may not be immediately apparent. We work closely with the client, architect, contractor and other consultants to conserve the materiality and character of historic architecture, ensuring the continuity of these unique qualities in the building's new lease of life.

RESEARCH The partners of Studio Lapis each has two decades of specialised research experience in architectural history, bringing to conservation projects their skills in archival research, investigation, and analysis. As part of the firm's ongoing research and development, the partners are working on a publication project on the early Modern Architecture of Singapore from the 1920s-1970s, covering extensive groundwork on colonial to post-independence Modernist structures including old Kallang Airport, Tanjong Pagar Railway Station, former Supreme Court, Singapore Conference Hall, Golden Mile Complex, and so on.

HO WENG HIN

Architectural Conservation Specialist

Director, STUDIO LAPIS

Adjunct Associate Professor, NUS Dept of Architecture

Specialista in Restauro dei Monumenti (cum laude) [University of Genoa, Italy, 2008]

Master of Architecture [NUS, 2001]

Bachelor of Architectural Studies [NUS, 1998]

Nationality

Singapore Citizen

Email

howh@studiolapis.sg

Expertise

- Architectural restoration techniques
- Deterioration diagnostics of historic building materials
- Field survey and documentation of heritage sites
- Historic construction technology
- Heritage Impact Assessment
- Conservation Management Plan
- Conservation project planning & management
- Adaptive reuse design and feasibility studies
- 20th Century Built and Landscapes Heritage

Professional Membership & Public Service

- Bureau Vice President, ICOMOS International Scientific Committee for 20th Century Heritage (2024-26)
- Founding Chair, Docomomo Singapore Chapter (2021 – present)
- Founding Director, International Council on Monuments & Sites (ICOMOS) Singapore National Committee (2014 – present)
- Affiliate, Asian Academy for Heritage Management (UNESCO-ICCROM)
- Member, NHB Carbon Calculator Advisory Panel (2024 – present)
- Member, Singapore Architectural Collection Technical Panel (2023 – present)
- Member, URA Heritage and Identity Partnership (2018 – present)
- Member, URA Conservation Guidelines Review Panel (2010 - present)
- Member, URA Architectural Heritage Awards Jury Panel (2009-2012)
- Member, MND Rail Corridor Partnership (2011- present)
- Member, Singapore Heritage Society (Exco Member 2004 – 2005)

Awards & Grants

2024	Ministry of National Development Dedicated Service Award
2024	URA Architectural Heritage Award for Conservation – Jiak Kim Street Godowns
2024	URA Architectural Heritage Award for Conservation – 59 Emerald Hill Road
2024	URA Architectural Heritage Award (Special Mention) – 12 Mount Sophia
2022	URA Architectural Heritage Award for Conservation and Innovation (Distinction) – St James Power Station
2022	Singapore Institute of Architects Design Award – St James Power Station
2022	URA Architectural Heritage Award for Conservation – Raffles Hotel
2020	Singapore Institute of Architects Design Award – Raffles Hotel
2018	URA Architectural Heritage Award Special Mention – Sophia Hills Development
2017	UNESCO Asia Pacific Awards for Cultural Heritage Conservation (Honourable Mention) – Cathedral of the Good Shepherd
2017	URA Architectural Heritage Award for Restoration – Cathedral of the Good Shepherd
2016	URA Architectural Heritage Award for Restoration & Innovation – Capitol Development
2016	URA Architectural Heritage Award Special Mention – South Beach Development
2011	Mubin Sheppard Memorial Prize, Cycle 9 for "Conservation Area Study" category, awarded by Badan Warisan Malaysia (with NUS Dept of Architecture)

2011	Urban Redevelopment Authority of Singapore sponsorship for KTM Built Heritage Conservation Survey undertaken by Singapore Heritage Society (With Tan Kar Lin and Lim Chen Sian, for SHS)
2005, 2007	Italian Government Scholarship for postgraduate specialization course in architectural restoration at the Università degli Studi di Genova, Italy
2004	Urban Redevelopment Authority of Singapore Architecture and Urban Design Excellence Grant for book project <i>Our Modern Past: Modern Architecture in Singapore 1920s – 70s</i> , to be published by Singapore Heritage Society (With Dinesh Naidu and Tan Kar Lin, for SHS)
2004	Singapore International Foundation & Lee Foundation Grant for conference presentation at <i>VIIIth DOCOMOMO International Conference</i> , 26 th Sep – 2 Oct 2004; Columbia University, New York City (with Dinesh Naidu and Tan Kar Lin).
2002	National Heritage Board (Singapore) Research and Curatorial Grant for improving the National Archives Building Plans Collection (With Tan Kar Lin)
1996	Dean's List Award for outstanding academic performance, Faculty of Architecture, Building and Real Estate, National University of Singapore

Professional Experience

2024 – present	Adjunct Associate Professor , Dept of Architecture, National University of Singapore
2020 – 2023	Adjunct Asst Professor , Dept of Architecture, National University of Singapore
2013 – 2017,	Adjunct Senior Lecturer , Dept. of Architecture, National University of Singapore
2018 – 2019	
2010 - 2012	Adjunct Lecturer , Dept. of Architecture, National University of Singapore
2009 - present	Partner & Director , Studio Lapis/ Studio Lapis Conservation Pte Ltd
2008 - 2009	Architectural Restoration Specialist Consultant
2004 - 2007	Editor , <i>Singapore Architect Journal</i> , Singapore Institute of Architects
2002 - 2003	Research Assistant , Department of Architecture, National University of Singapore
2000 - 2002	Editor , <i>Singapore Architect Journal</i> , Singapore Institute of Architects
2000 - 2001	Junior Research Assistant , Department of Architecture, National University of Singapore
1998 - 1999	Architectural Assistant , William Lim Associates Pte, Singapore.

Selected Projects

2024 – ongoing	Heritage Study on former Singapore Naval Base , for Government of Singapore
2024 – ongoing	Heritage Impact Assessment for former Gillman Barracks , for Housing Development Board
2024 – ongoing	Architectural conservation specialist consultancy for former Upper Thomson Secondary School , for Guocoland Ltd
2024 – ongoing	Architectural conservation specialist consultancy for Grandstands at former Bukit Timah Turf Club , for Urban Redevelopment Authority
2024 – ongoing	Architectural conservation specialist consultancy and impact studies on former Bukit Timah Turf Club , for Land Transport Authority
2024	Architectural conservation specialist consultancy for Telephone Exchange Buildings , for Singapore Telecommunications Ltd
2023 – ongoing	Architectural conservation specialist consultancy for former Trades Union House (National Monument) , for Singapore Land Authority
2023 – ongoing	Architectural conservation specialist consultancy for former Attorney General's Chambers (National Monument) , for Parliament of Singapore
2023 – ongoing	Architectural conservation specialist consultancy for Batu Gajah Hospital, Malaysia , for ThinkCity and UEM
2023 – ongoing	Architectural conservation feasibility study on historic structures at the Old Police Academy , for Housing Development Board
2023 – ongoing	Architectural conservation specialist consultancy for Sultan Mosque, (National Monument) , for Sultan Mosque Board of Trustees
2022 – ongoing	Architectural conservation specialist consultancy for Golden Mile Complex , for Perennial Holdings and Far East Organisation
2022 – ongoing	Architectural conservation specialist consultancy for Temasek Shophouse Extension , for Temasek Trust
2021 – 2022	Architectural heritage advisory for OCBC Centre for OCBC Properties Pte Ltd
2021 – 2022	Architectural heritage advisory for Lau Pa Sat (Telok Ayer Market) rebranding , for Fairprice Group
2021 – ongoing	Architectural conservation specialist consultancy for Central Mall SDI , for City Developments Ltd

2021 – 2022	Consultancy Services for Heritage Research Study, for Urban Redevelopment Authority of Singapore
2019 – 2024	Architectural conservation specialist consultancy for former Kallang Airport and Hangar, for Singapore Land Authority
2019 – ongoing	Architectural conservation specialist consultancy for Cairnhill Road Bungalow, for Low Keng Huat (Singapore) Ltd
2018 – 2022	Architectural conservation specialist consultancy for former Tanjong Pagar Railway Station, for Singapore Land Authority
2018 – 2021	Architectural conservation specialist consultancy for restoration of Church of St Teresa, for Church of St Teresa
2017 – ongoing	Architectural conservation specialist consultancy for Additions & Alterations to Singapore Art Museum, for Ministry of Culture, Community and Youth
2017 – 2022	Architectural conservation specialist consultancy for State-owned historic properties, for Singapore Land Authority
2017 – 2022	Architectural conservation specialist consultancy for former St James Power Station, for Mapletree Holdings Ltd (Base Build) and Dyson Ltd (Interior Fit Out)
2016 – 2019	Architectural conservation specialist consultancy for redevelopment former Traffic Police HQ (Maxwell Chambers Suites), for Ministry of Law, Singapore.
2016 - 2022	Conservation and adaptive reuse specialist consultancy for Halic Tersane, Istanbul, Turkey, for Sembol-Ekopark İnşaat-Fine Otelcilik JV
2016 – 2018	Architectural conservation specialist consultancy for Yangon Central Railway Station Redevelopment RFP, for Yoma Strategic Holdings, Ltd. <i>Finalist Team: Aedas – Arup Singapore – Ramboll Atelier Dreiseitl</i>
2014 - ongoing	Architectural conservation specialist consultancy and impact studies on historic buildings affected by Circle Line Stage 6, for Land Transport Authority
2013 - 2019	Architectural conservation specialist consultancy for Raffles Hotel, for Katara Hospitality Ltd.
2013 - 2018	Architectural conservation specialist consultancy for former MGS Olson Building, Trinity Theological College Chapel, and Nan Hwa Girls' School, Singapore, for Hoi Hup Sunway Mount Sophia Pte. Ltd.
2013 - 2020	Architectural conservation specialist consultancy for former Myanmar Railways Building, Yangon, Myanmar, for Peninsula Yangon Ltd.
2012 - 2017	Architectural conservation specialist consultancy for Cathedral of the Good Shepherd, Singapore, for Cathedral of the Good Shepherd.
2011 - 2015	Architectural conservation specialist consultancy for Capitol Building, Theatre and Stamford House, Singapore, for Architects 61.
2009 - 2015	Architectural conservation of former military complex and NCO Club at Beach Road, Singapore (South Beach Development), for South Beach Consortium Pte Ltd.
2008-09	Façade restoration (artificial stone) for the former Victoria School building (People's Association HQ Project) for Singapore Piling & Civil Engineering Pte Ltd.
2007-08	Documentation, Analysis and Conservation Guidelines for the Former Supreme Court Building Singapore (with School of Specialization in Restoration of Monuments, Genoa, submitted to MICA and PMB for use in National Art Gallery Project).

TAN KAR LIN

Architectural Heritage Research Specialist
Director, STUDIO LAPIS

Master of Arts (Architecture) [NUS, 2004]

Master of Architecture [NUS, 2001]

Bachelor of Architectural Studies [NUS, 1998]

Nationality Singapore Citizen
Email mail@studiolapis.sg

Expertise

- Archival research and analysis
- Colonial and modernist architectural heritage in Singapore
- Place history and urban culture
- Built heritage documentation and evaluation
- Adaptive reuse architectural design
- Modern Architecture, Sites and Landscapes

Professional Membership & Civil Society Involvement

- Member, Design Advisory Panel (Conservation)
- Founding Exco Member, Docomomo Singapore Chapter
- Founding Director, ICOMOS Singapore
- Associate Member, Singapore Institute of Architects
- Member, Singapore Heritage Society (Exco Member 2004 – 2005)

Awards & Grants

2024	URA Architectural Heritage Award for Conservation – Jiak Kim Street Godowns
2024	URA Architectural Heritage Award for Conservation – 59 Emerald Hill Road
2024	URA Architectural Heritage Award (Special Mention) – 12 Mount Sophia
2022	URA Architectural Heritage Award for Conservation and Innovation (Distinction) – St James Power Station
2022	Singapore Institute of Architects Design Award – St James Power Station
2022	URA Architectural Heritage Award for Conservation – Raffles Hotel
2020	Singapore Institute of Architects Design Award – Raffles Hotel
2018	URA Architectural Heritage Award Special Mention – Sophia Hills Development
2017	UNESCO Asia Pacific Awards for Cultural Heritage Conservation (Honourable Mention) – Cathedral of the Good Shepherd
2017	URA Architectural Heritage Award for Restoration – Cathedral of the Good Shepherd
2016	URA Architectural Heritage Award for Restoration & Innovation – Capitol Development
2016	URA Architectural Heritage Award Special Mention – South Beach Development
2014	NHB Heritage Project Grant for book project <i>Our Modern Past: Modern Architecture in Singapore 1920s – 70s</i>
2004	URA Architecture and Urban Design Excellence Grant for book project <i>Our Modern Past: Modern Architecture in Singapore 1920s – 70s</i>
2002	National Heritage Board (Singapore) Research and Curatorial Grant for improvement of the National Archives Building Plans Collection.
2001-03	National University of Singapore Research Scholarship for MA(Arch) by Research degree at the Centre for Advanced Studies in Architecture, NUS.

Professional Experience

2009 - present	Partner & Director, Studio Lapis
2008-2009	Architectural Heritage Research Consultant
2004 - 2007	Editor & Chinese Editor, Singapore Architect Journal, Singapore Institute of Architects

2003	Teaching Assistant, Department of Architecture, National University of Singapore
2000 - 2002	Editor, Singapore Architect Journal , Singapore Institute of Architects
2000 - 2001	Junior Research Assistant, Department of Architecture, National University of Singapore
1998 - 1999	Architectural Assistant, Point Architects, Singapore.

Selected Projects

Built Heritage Conservation & Research Consultancy

2024 – ongoing	Heritage Study on former Singapore Naval Base , for Government of Singapore
2024 – ongoing	Heritage Impact Assessment for former Gillman Barracks , for Housing Development Board
2024 – ongoing	Architectural conservation specialist consultancy for 45 Armenian Street (formerly The Substation) , for National Arts Council
2023 – ongoing	Architectural heritage consultancy for City Terminals , for Urban Redevelopment Authority
2022 – ongoing	Architectural conservation specialist consultancy for Golden Mile Complex , for Perennial Holdings and Far East Organisation
2021 – 2022	Consultancy Services for Heritage Research Study , for Urban Redevelopment Authority of Singapore
2021 – ongoing	Architectural conservation specialist consultancy for historic state-owned properties and structures in Singapore , for National Parks Board, Singapore
2018 – 2020	Architectural conservation specialist consultancy for NHB Museums , for National Heritage Board
2017 – 2021	Architectural conservation specialist consultancy for State-owned historic properties , for Singapore Land Authority
2016 - 2017	Research Study and Conservation Management Plan for Haw Par Villa , Singapore for National Heritage Board Singapore
2015	Architectural conservation specialist for Singapore Rail Corridor RFP , for Urban Redevelopment Authority Singapore <i>Finalist Team: Office of Metropolitan Architects – OLIN – DP Architects</i> <i>Finalist Team: MVRDV – Grant Associates – Architects 61</i>
2014 - ongoing	Architectural conservation specialist consultancy and impact studies on historic buildings affected by infrastructural development , for Land Transport Authority
2013 - 2018	Architectural conservation specialist consultancy for former MGS Olson Building, Trinity Theological College Chapel, and Nan Hwa Girls' School , Singapore, for Hoi Hup Sunway Mount Sophia Pte. Ltd.
2013 - 2020	Architectural conservation specialist consultancy for former Myanmar Railways Building, Yangon, Myanmar , for Peninsula Yangon Ltd.
2012 - 2017	Architectural conservation specialist consultancy for Cathedral of the Good Shepherd , Singapore, for Cathedral of the Good Shepherd.
2011 - 2015	Historiography documentation of the restoration of Victoria Theatre and Victoria Concert Hall , Singapore, for MICA/ NAC
2011 - 2015	Architectural conservation specialist consultancy for Capitol Building, Theatre and Stamford House , Singapore (URA Land Sales redevelopment), for Architects 61.
2011-12	Built heritage documentation and evaluation of Singapore railway landscapes, structures and artefacts , for Singapore Heritage Society, submitted to MND and URA.
2009 - 2015	Architectural conservation of former military complex and NCO Club at Beach Road , Singapore (South Beach Development), for South Beach Consortium Pte Ltd.

Publications and Academic Research

2017 – 2021	Chief Editor & Expert Contributor, Conservation Technical Handbook Series: A Guide to Best Practices , for Urban Redevelopment Authority & ICOMOS Singapore
2013	Author & Researcher, Green Ink on an Envelope: the Architectural Journey of Sonny Chan Sau Yan , Singapore: CSYA and Singapore Heritage Society, 300pp.
2005-07	Co-Editor, Singapore Architect Journal #225 – 237 , Singapore Institute of Architects.
2004 - 2014	Author & Researcher (With Ho Weng Hin and Dinesh Naidu), Our Modern Past: Modern Architecture in Singapore 1920s – 70s , Singapore: Singapore Heritage Society, in 2 Vols.
2001-04	The 'Worlds' Entertainment Parks of Singapore (1920s-1980s): New Urban Form and Social Space for Culture and Consumption (Academic dissertation for MA(Arch) degree, NUS, Supervisor: Dr Wong Yunn Chii).

ARCHITECTURAL CONSERVATION PORTFOLIO



<i>Year</i>	2006
<i>Site</i>	Former Supreme Court (1939) & former City Hall (1928)
<i>Building Type</i>	Neo-classical institutional buildings (steel, RC and masonry structure)
<i>Project</i>	Initial Conservation Assessment for the National Art Gallery Project (Singapore) in collaboration with NUS Department of Architecture
<i>Scope</i>	State of conservation survey & report
<i>Client</i>	MICA Art Gallery Project Unit (AGPU)

* National Monuments



<i>Year</i>	2006 – 2007
<i>Site</i>	Former Church of S. Bartolomeo dell'Olivella, Genoa, Italy (14th C)
<i>Building Type</i>	Medieval religious building (masonry & timber structure)
<i>Project</i>	Architectural Conservation Survey and Adaptive Re-use Proposal
<i>Scope</i>	<ul style="list-style-type: none"> • Materials and deterioration assessment for natural stone, lime plaster, fresco painting, timber, iron, copper etc. • Non-invasive site investigation incl. IR thermography, magnetometry etc. • Material sampling and laboratory test analyses incl. petrographic-minerological analysis, SEM-EDS, FTIR
<i>Client</i>	Ministry of Cultural Assets, Ligurian Bureau, Italy (with the University of Genoa, Italy)



<i>Year</i>	2006 – 2008
<i>Site</i>	Former Supreme Court, Singapore (1939)
<i>Building Type</i>	Neoclassical institutional building (steel, RC & masonry structure)
<i>Project</i>	Specialisation Thesis submitted to MICA and PMB for use in NAG Project
<i>Scope</i>	<ul style="list-style-type: none"> • Architectural conservation documentation analysis & guidelines • Materials and deterioration assessment for artificial stone facades, terrazzo finishes, plasterwork, rubber tiling etc. • Material sampling and laboratory test analyses incl. petrographic-minerological analysis, SEM-EDS, FTIR, tests for soluble salts, carbonation of artificial stone finishes • Restoration specification and techniques for artificial stone and terrazzo

* National Monument



<i>Year</i>	2008 – 2009
<i>Site</i>	54 & 56 Heeren Street, Malacca, Malaysia (Late 18 C & 1930s)
<i>Building Type</i>	Dutch & British colonial terraced townhouses (masonry & timber structure)
<i>Project</i>	Architectural Conservation and Adaptive Re-use for NUS-DOA Tun Tan Cheng Lock Centre for Asian Built Heritage Research and Conservation
<i>Scope</i>	<ul style="list-style-type: none"> • Materials and deterioration assessment for brick masonry, lime plaster, mineral paintwork and metallic elements • Non-invasive site investigation incl. IR thermography
<i>Client</i>	NUS Department of Architecture

* Restoration Project in UNESCO World Heritage Site



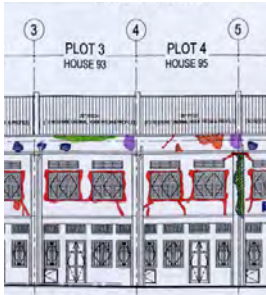
<i>Year</i>	2008 – 2009
<i>Site</i>	Former Victoria School, Singapore (1933)
<i>Building Type</i>	Art Deco/ Modernist institutional building (RC & masonry structure)
<i>Project</i>	Adaptive Re-use & Extension for People's Association HQ
<i>Scope</i>	<ul style="list-style-type: none"> • Materials and deterioration assessment for artificial stone facades • Interpretation of laboratory test analyses incl. petrographic-minerological analysis, fluorescent microscopy • Conservation specifications, trial mock-ups and site supervision for restoration of artificial stone facades
<i>Client</i>	Singapore Piling and Engineering Pte Ltd
<i>Architect</i>	Architects 61 Pte Ltd

* Winner of URA Architectural Heritage Awards 2009



<i>Year</i>	2009
<i>Site</i>	Hong San See Temple, Singapore (1913)
<i>Building Type</i>	Southern Chinese religious building (<i>Minnan</i> traditional timber and stone structure)
<i>Project</i>	Restoration of National Monument
<i>Scope</i>	<ul style="list-style-type: none"> • Materials and deterioration assessment for natural stone stelae • Conservation specifications, trial mock-ups and restoration cleaning for natural stone stelae
<i>Client</i>	Preservation of Monuments Board, Singapore

* UNESCO Asia Pacific Awards for Cultural Heritage Conservation 2010 - Award of Excellence



<i>Year</i>	2009
<i>Site</i>	9 Units Conservation Shophouses, Joo Chiat, Singapore (1940s-50s)
<i>Building Type</i>	Art Deco/ Modernist terraced shophouses (RC & masonry structure)
<i>Project</i>	Heritage 9 Development (Adaptive Re-use and New Extension)
<i>Scope</i>	<ul style="list-style-type: none"> • Materials and deterioration assessment for artificial stone facades • Conservation specifications, trial mock-ups and site supervision for restoration of artificial stone facades
<i>Client</i>	Soil-Build Pte Ltd
<i>Architect</i>	AGA Architects Pte Ltd



<i>Year</i>	2010, 2012
<i>Site</i>	157 Neil Road, Singapore (1890s)
<i>Building Type</i>	Peranakan terraced townhouse (loadbearing masonry and timber structure)
<i>Scope</i>	<ul style="list-style-type: none"> • Materials and deterioration assessment for lime plaster and ornamentation • Trial mock-ups, restoration cleaning, biocide treatment and consolidation of lime plaster and ornamentation
<i>Client</i>	NUS Museums, National University of Singapore



<i>Year</i>	2009 – 2011
<i>Site</i>	St. George's Church, Georgetown, Penang, Malaysia (1818)
<i>Building Type</i>	Georgian Neo-classical religious building (masonry & timber structure)
<i>Project</i>	Restoration of National Monument
<i>Scope</i>	<ul style="list-style-type: none"> • Architectural conservation documentation analysis & guidelines • Materials and deterioration assessment for brick masonry, lime plaster, paintwork, stone, terrazzo, timber and metallic finishes • Interpretation of laboratory test analyses incl. petrographic-minerological analysis • Restoration specification and techniques
<i>Architect</i>	East Design Architects Sdn Bhd

* National Monument (Malaysia) in UNESCO World Heritage Site



<i>Year</i>	2009 – 2015
<i>Site</i>	Former military complex & NCO Club at Beach Road, Singapore (1930s-50s)
<i>Building Type</i>	Modernist military/ institutional buildings (RC & masonry structure)
<i>Project Scope</i>	South Beach Development, Singapore <ul style="list-style-type: none"> • Architectural conservation documentation, analysis & guidelines • Architectural design review for conservation buildings • Materials and deterioration assessment. • Restoration specification and techniques • Construction stage specialist consultancy
<i>Client</i>	South Beach Consortium Pte Ltd
<i>Design</i>	Foster and Partners (UK)
<i>Architect</i>	Aedas Pte Ltd

* URA Architectural Heritage Awards 2016 – Special Mention

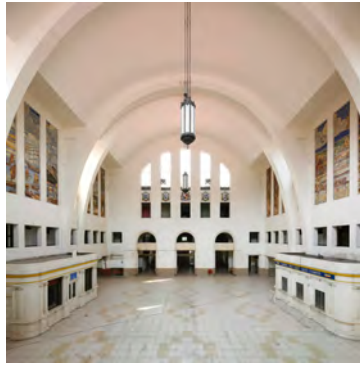


<i>Year</i>	2010
<i>Site</i>	Capitol Building & Theatre (1930); Stamford House (1906)
<i>Building Type</i>	Neoclassical recreational/ residential (RC/ steel/ timber structures)
<i>Project Scope</i>	URA Land Sales for redevelopment (Pre-bid stage) <ul style="list-style-type: none"> • Architectural conservation initial survey and assessment • Archival building plans and historical research
<i>Client</i>	Valparaiso Singapore Pte Ltd/ Gaw Capital
<i>Design</i>	Herzog & de Meuron (Switzerland)
<i>Architect</i>	Aedas Pte Ltd

* One of three finalists in URA Land Sales Two-Envelope competitive bid

<i>Year</i>	2011 – 2015
<i>Site</i>	Capitol Building & Theatre (1930); Stamford House (1906)
<i>Building Type</i>	Neoclassical recreational/ residential (RC/ steel/ timber structures)
<i>Project Scope</i>	URA Land Sales for redevelopment <ul style="list-style-type: none"> • Architectural conservation documentation, analysis & guidelines • Architectural design review for conservation buildings • Materials and deterioration assessment • Restoration specification and techniques • Construction stage specialist consultancy
<i>Client</i>	Architects 61 Pte Ltd
<i>Design</i>	Richard Meier & Partners LLP (USA)
<i>Architect</i>	Architects 61 Pte Ltd

* URA Architectural Heritage Awards 2016 – Award for Restoration & Innovation



<i>Year</i>	2011 – 2012
<i>Site</i>	Singapore railway land (former KTM railway) (1903-70s)
<i>Building Type</i>	Art Deco/ Modernist transport, infrastructure and ancillary buildings (RC & brick masonry structure)
<i>Project</i>	Singapore Railway Heritage Survey & Documentation (Rail Corridor Project)
<i>Scope</i>	<ul style="list-style-type: none"> • Built Heritage Survey of former train stations, engineering, residential and other structures • Photo-documentation and mapping of railway heritage landscapes, structures and artefacts
<i>Client</i>	Singapore Heritage Society

* National Monument (former Tanjong Pagar Railway Station)



<i>Year</i>	2012 – 2015
<i>Site</i>	Victoria Concert Hall and Theatre, Singapore (1905)
<i>Building Type</i>	Neo-classical institutional building (loadbearing masonry, steel and timber structure)
<i>Scope</i>	<ul style="list-style-type: none"> • Archival research and oral history • Construction and historiography documentation by videography and photography
<i>Client</i>	Ministry of Information, Communication and the Arts Singapore (MICA)
<i>Architect</i>	W Architects

* National Monument



<i>Year</i>	2012 – 2016
<i>Site</i>	Cathedral of the Good Shepherd, Singapore (1846)
<i>Building Type</i>	Neo-classical religious building (masonry & timber structure)
<i>Project</i>	Additions & Alterations to National Monument
<i>Scope</i>	<ul style="list-style-type: none"> • Archival research and conservation survey • Materials and deterioration assessment for brick masonry, lime plaster, paintwork, stone, timber and metal • Restoration specification and techniques • Construction stage specialist consultancy
<i>Client</i>	Cathedral of the Good Shepherd
<i>Architect</i>	Architects 61 Pte Ltd

* National Monument

* UNESCO Asia Pacific Awards for Cultural Heritage Conservation 2017 - Honourable Mention

* URA Architectural Heritage Awards 2017 – Award for Restoration



<i>Year</i>	2013 - 2020
<i>Site</i>	Former Myanmar Railways Building, Yangon, Myanmar (1870s)
<i>Building Type</i>	Victorian-era institutional building (masonry & timber structure)
<i>Project</i>	The Peninsula Yangon/ Landmark Project
<i>Scope</i>	<ul style="list-style-type: none"> • Architectural heritage survey • Dilapidation and tactile survey • Conservation design consultancy • Restoration specifications and techniques
<i>Client</i>	Peninsula Yangon Limited
<i>Architect</i>	Aedas Pte Ltd

* Yangon Heritage Listed Building



<i>Year</i>	2013 - 2018
<i>Site</i>	Former MGS Olson Building (1928), Trinity Theological College Chapel (1968), Nan Hwa Girls' School (1941)
<i>Building Type</i>	Early modern institutional building, postwar modern church (masonry & RC structures)
<i>Project</i>	Mount Sophia development
<i>Scope</i>	<ul style="list-style-type: none"> • Architectural heritage survey • Architectural design review for conservation buildings • Materials and deterioration assessment • Restoration specification and techniques • Construction stage specialist consultancy
<i>Client</i>	Hoi Hup Sunway Mount Sophia Pte Ltd
<i>Architect</i>	Consortium 168 Pte Ltd

* URA Architectural Heritage Awards 2018 – Special Mention



<i>Year</i>	2013 - 2019
<i>Site</i>	Raffles Hotel (1889-1907) (Raffles Arcade - 1989)
<i>Building Type</i>	Hotel compound with buildings in various colonial revivalist styles (masonry & timber structure)
<i>Project</i>	Renovation Works to Raffles Hotel
<i>Scope</i>	<ul style="list-style-type: none"> • Architectural heritage survey & design review • Materials and deterioration assessment • Restoration specification and techniques • Construction stage specialist consultancy
<i>Client</i>	Katara Hospitality
<i>Architect</i>	Aedas Pte Ltd

* National Monument

* Singapore Institute of Architects Design Award 2020 (Special Category)

* URA Architectural Heritage Award (Conservation) 2020



Year 2014
Site **Former Catholic High School (1951)**
Building Type Art Deco/ Modernist institutional building (RC structure)
Project Feasibility Studies on A&A to Singapore Art Museum
Scope

- Initial conservation site survey
- Architectural heritage research
- Conservation design review

Client National Heritage Board
Architect W Architects Pte Ltd



Year 2014 - 2018
Site **St George's Church (1911)**
Building Type Arts & Crafts movement religious building (fairfaced brick masonry structure)
Project Conservation Maintenance and Phased Restoration
Scope

- Condition assessment and materials investigation
- Long-term maintenance and restoration plan
- PSM Monuments Grant application
- Construction stage project management

Client St George's Church Council

* National Monument

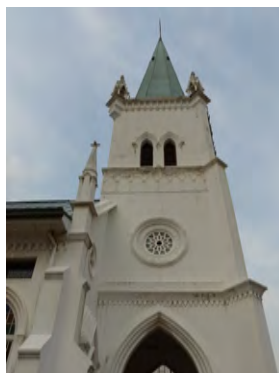


Year 2014 - ongoing
Site **Southern Singapore**
Building Type Various (20th C. brick masonry, timber and RC structures)
Project Impact Studies on Historic Buildings Affected by Infrastructural Development including former Tg Pagar Railway Station
Scope

- Architectural Heritage Survey
- Building Condition Assessment
- Impact Study & Mitigation

Client Land Transport Authority
Engineer AECOM

* National Monument



Year 2015
Site **Church of the Nativity of the Blessed Virgin Mary (1901)**
Building Type Neo-Gothic religious building (partial brick masonry and RC structure)
Project Architectural Restoration of National Monument
Scope

- Condition assessment and materials investigation
- Scope of restoration work
- PSM Monuments Grant application

Client Church of the Nativity of the Blessed Virgin Mary

* National Monument



Year 2016 - 2021
Site **Halic Tersane, Istanbul, Turkey (1700s – 1980s)**
Building Type Brick, masonry, timber, RC and steel workplace buildings (Ottoman and Republic eras)
Project Scope Conservation & Mixed Use Redevelopment
 • **Conservation Design and Adaptive Reuse**
 • **Initial Condition Assessment / Restoration Strategies**
Client Sembol-Ekopark İnşaat-Fine Otelcilik JV
Designer DP Architects Pte Ltd



Year 2016 - 2019
Site **Former Traffic Police HQ Building, Singapore (1930)**
Building Type Stripped Classicism/ institutional/ barracks - offices
Project Scope Maxwell Chambers Suites
 • **Architectural heritage survey**
 • **Conservation design analysis and input**
 • **Conservation technical specifications**
 • **Construction stage specialist consultancy**
 • **Heritage Interpretation**
Client Ministry of Law, Singapore
Architect W Architects Pte Ltd

* BCA Design & Engineering Safety Award 2020



Year 2016 – 2017
Site **Haw Par Villa, Singapore (1930s – 70s)**
Building Type Landscape gardens with structures, statuary and tableau
Project Scope Research Study on Haw Par Villa
 • **Archival and bibliographical research**
 • **Field studies and materials testing**
 • **Documentation and condition assessment**
 • **Conservation Management Plan**
Client National Heritage Board, Singapore



Year 2016 - 2021
Site **Church of St Teresa (1929)**
Building Type Romano-Byzantine influenced religious building (RC Structure)
Project Scope Architectural Restoration of National Monument
 • **Architectural Heritage & Dilapidation Survey**
 • **PSM Monuments Grant Application**
 • **Conservation Design & Tender Stage**
 • **Construction Stage Specialist Consultancy**
Client Church of St Teresa

* National Monument



Year 2016 - 2018
Site **Ellison Building, Singapore (1925)**
Building Type Art Deco/ Shophouses (loadbearing masonry and timber structure)
Project Conservation Study & Investigation Associated with Construction of North South Corridor
Scope

- Architectural heritage survey
- Heritage impact assessment
- Conservation technical specifications

Client Land Transport Authority, Singapore
Engineer Arup Singapore



Year 2017
Site **Ben Thanh Market, Ho Chi Minh City, Vietnam (1914)**
Building Type Fresh and dry goods market building (Ferroconcrete structure)
Project Conservation & Redevelopment Concept Masterplan
Scope

- Architectural Heritage Survey Report

Client Tien Phuoc Real Estate JSC
Architect DP Architects Pte Ltd



Year 2017 - 2021
Site **Historic State-owned properties in Singapore (1890s – 1950s)**
Building Type Former government bungalows and staff quarters (Brick masonry/ timber/ RC/ steel structures)
Project Architectural Conservation Specialist Consultancy
Scope

- Built Heritage Survey & Assessment
- Detailed Conservation Investigation
- Conservation Management Plan

Client Singapore Land Authority



Year 2017 - Ongoing
Site **Former St Josephs' Institution (1870s) & Catholic High School (1950s)**
Building Type Missionary school buildings adapted as contemporary art museums (Brick masonry/ RC structures)
Project Additions & Alterations to Singapore Art Museum
Scope

- Architectural heritage survey
- Conservation design analysis and input
- Conservation technical specifications
- Construction stage specialist consultancy

Client Ministry of Culture, Community & Youth
Architect SCDA Architects

* National Monument



<i>Year</i>	2017 - 2022
<i>Site</i>	Former St James Power Station (1928)
<i>Building Type</i>	Industrial building (Steel structure and fairfaced brick facades)
<i>Project Scope</i>	Redevelopment of St James Power Station <ul style="list-style-type: none"> • Architectural heritage survey • Conservation design analysis and input • Conservation technical specifications • Construction stage specialist consultancy • Heritage interpretation + curatorial
<i>Client</i>	Mapletree Holdings Ltd (Base-Build)
<i>Architect</i>	W Architects Pte Ltd
<i>Client</i>	Dyson Ltd (Interior Fit Out)
<i>Designer</i>	M Moser Associates

* National Monument

* URA Architectural Heritage Award (Conservation and Innovation – Distinction) 2022

* Singapore Institute of Architects Design Award (Special Category) 2022



<i>Year</i>	2018 - 2024
<i>Site</i>	Former Beach Road Police Station, Singapore (1933)
<i>Building Type</i>	Police station/ offices and quarters (RC structure)
<i>Project Scope</i>	Beach Road Mixed Development <ul style="list-style-type: none"> • Architectural heritage survey • Conservation design analysis and input • Conservation technical specifications • Heritage interpretation + curatorial • Construction stage specialist consultancy
<i>Client</i>	GuocoLand Ltd
<i>Designer</i>	Denton Corker Marshall
<i>Architect</i>	DP Architects



<i>Year</i>	2018 - 2023
<i>Site</i>	Jiak Kim Street Godowns, Singapore (1910s-20s)
<i>Building Type</i>	Industrial buildings (Load-bearing brick masonry and timber structure)
<i>Project Scope</i>	Jiak Kim Street Development <ul style="list-style-type: none"> • Architectural heritage survey • Conservation design analysis and input • Conservation technical specifications • Heritage interpretation + curatorial • Construction stage specialist consultancy
<i>Client</i>	Fraser's Properties Ltd
<i>Designer</i>	SCDA Architects Pte Ltd
<i>Architect</i>	P&T Architects and Engineers Ltd

* URA Architectural Heritage Award (Conservation) 2024

* BCA Design & Engineering Safety Award 2020



<i>Year</i>	2018 - 2023
<i>Site</i>	12 Mount Sophia, Singapore (1893)
<i>Building Type</i>	Bungalow (Brick masonry/ timber/ structure)
<i>Project</i>	Handy Road Redevelopment
<i>Scope</i>	<ul style="list-style-type: none"> • Architectural heritage survey • Conservation design analysis and input • Conservation technical specifications • Heritage interpretation + curatorial • Construction stage specialist consultancy
<i>Client</i>	CDL Regulus Pte Ltd
<i>Architect</i>	Architects 61 Pte Ltd

* URA Architectural Heritage Awards 2024 – Special Mention



<i>Year</i>	2018 - 2022
<i>Site</i>	Former Tanjong Pagar Railway Station (1930)
<i>Building Type</i>	Infrastructure/ railway terminus (RC structure, Shanghai Plaster facades)
<i>Project</i>	Architectural Conservation Specialist Consultancy
<i>Scope</i>	<ul style="list-style-type: none"> • Architectural Heritage Survey • Conservation Management Plan • Conservation technical specifications • Protection Works specialist consultancy
<i>Client</i>	Singapore Land Authority

* National Monument



<i>Year</i>	2018 - 2021
<i>Site</i>	Former Empress Place Building (1870s – 1920s) National Museum of Singapore (1880s – 1930s) Former Tao Nan School (1906) Former Istana Kampong Glam (1843) Sun Yat Sun Villa (1901)
<i>Building Type</i>	Institutional/ Museums (Brick masonry/ timber/ steel structures)
<i>Project</i>	Architectural Conservation Specialist Consultancy
<i>Scope</i>	<ul style="list-style-type: none"> • Architectural Heritage Survey • Conservation Management Plan
<i>Client</i>	National Heritage Board Singapore

* National Monuments



<i>Year</i>	2019 - ongoing
<i>Site</i>	67 Cairnhill Road, Singapore (1902)
<i>Building Type</i>	Bungalow (Brick masonry/ timber/ structure)
<i>Project</i>	Cairnhill Road Condominium Development
<i>Scope</i>	<ul style="list-style-type: none"> • Architectural heritage survey • Conservation design guidance • Conservation technical specifications • Heritage interpretation • Construction stage specialist consultancy
<i>Client</i>	Low Kheng Huat (S) Ltd
<i>Architect</i>	DP Architects Pte Ltd



Year 2019 - 2024
Site Former Kallang Airport and Hangars, Singapore (1937)
Building Type Civic/ Industrial (Steel/ brick masonry structure)
Project Conservation and
Scope

- Architectural heritage survey
- Conservation design guidance
- Conservation technical specifications
- Construction stage specialist consultancy

Client Singapore Land Authority
Architect Zarch Collaboratives



Year 2019 - 2020
Site Shophouses at Stanley Street (1900s)
Building Type Terraced shophouses (loadbearing masonry and timber structure)
Project Architectural Conservation Specialist Consultancy
Scope

- Architectural Heritage Survey
- Conservation Technical Specifications

Client Taiko Properties Pte Ltd

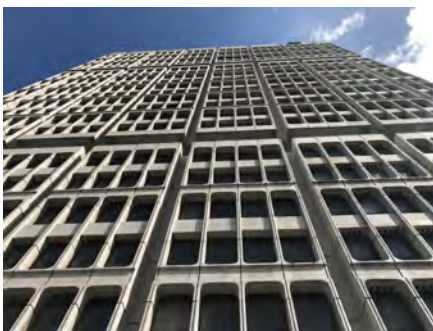


Year 2019 - 2021
Site National Museum of Singapore (1880s – 1930s)
Building Type Institutional/ Museum (Brick masonry/ timber/ cast iron)
Project Feasibility Studies on A&A to National Museum of Singapore
Scope

- Initial conservation site survey
- Architectural heritage research
- Conservation design review

Client National Heritage Board Singapore

* National Monument



Year 2020
Site Shaw Tower (1977)
Building Type High Rise Mixed Use (RC/ steel structure with precast concrete cladding)
Project Shaw Tower Heritage Studies
Scope

- Façade cladding technical study
- Heritage Interpretation

Client Shaw Foundation
Architect Aedas



Year 2020 – 2021
Site **Mountbatten Road Bungalow (1930s)**
Building Type Residential (RC and timber structure)
Project Heritage Studies
Scope • Architectural heritage survey
 • Heritage Interpretation
Client DSLSG Investment Co. Pte Ltd



Year 2020 – 2024
Site **Shophouses at New Bridge Road (1934)**
Building Type Terraced shophouses (loadbearing masonry and timber structure)
Project Project Noble (Hotel Development)
Scope • Construction Stage Specialist Consultancy
Client HK Street Pte Ltd
Architect WOHA Architects
Contractor Sunray Woodcraft



Year 2020 - Ongoing
Site **Alexandra Hospital (1938, 1950s – 80s)**
Building Type Institutional/ Medical (RC/ Brick masonry structure)
Project Phase 1: Decanting, Demolition and Improvement Works to Alexandra Hospital
Scope • Architectural Heritage Desktop Research
 • Impact Assessment & Mitigation
 • Heritage Management Plan
 • Construction Stage Specialist Consultancy
Client MOH Holdings Pte Ltd
Architect Forum Architects



Year 2020 - Ongoing
Site **Historic State-owned properties and structures in Singapore (1850s – 1970s)**
Building Type Various: former government buildings and staff quarters, military and memorial structures (Brick masonry/ timber/ RC/ steel/ cast iron)
Project Architectural Conservation Specialist Consultancy
Scope • Architectural Heritage Survey & Assessment
 • Heritage Management Plan
 • Conservation & Maintenance Consultancy
Client National Parks Board

* National Monuments



Year 2020 - 2021
Site **Clarke Quay (1860s – 1950s)**
Building Type Commercial Godowns and Shophouses (Brick masonry/ timber/ RC/ steel)
Project Clarke Quay Rejuvenation Feasibility Studies
Scope • **Architectural Heritage Survey & Assessment**
Client CapitaLand Ltd
Architect Meta x Formwerkz Architects



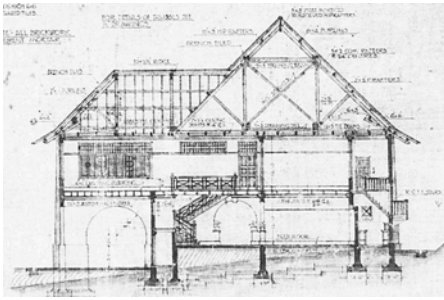
Year 2021 - 2022
Site **Historic bungalow at Nassim Road (1906)**
Building Type Former colonial staff quarters, military and memorial structures (Brick masonry/ timber/ RC/ steel/ cast iron)
Project Architectural Conservation Specialist Consultancy
Scope • **Architectural Heritage Survey & Assessment**
 • **Conservation & Maintenance Consultancy**
Client SC Capital Partners



Year 2021 - Ongoing
Site **Former site of Kampong Melaka (1910s – 30s)**
Building Type Commercial godowns and shophouses (Brick masonry/ timber/ RC/ steel)
Project Union Square Development
Scope • **Architectural heritage survey**
 • **Conservation design guidance**
 • **Heritage Interpretation plan**
 • **Conservation technical specifications**
 • **Construction stage specialist consultancy**
Client City Developments Ltd
Architect Aedas Singapore



Year 2021 – 2022
Site **Former Bukit Timah Station (1953)**
Building Type Civic/ Institutional (RC/ steel/ timber structure)
Project C40 Reinventing Cities Development
Scope • **Architectural heritage survey**
 • **Conservation design guidance**
 • **Heritage Interpretation plan**
 • **Conservation technical specifications**
Client Homestead Holland Pte Ltd
Architect Provolk Architects x Wy-To Singapore



Year 2021 - 2024
Site Historic bungalow at Chatsworth Park (1926)
Building Type Bungalow (Brick masonry/ timber structure)
Project Architectural Conservation Specialist Consultancy
Scope

- Architectural heritage survey
- Conservation technical specifications
- Construction stage specialist consultancy

Client Private Owner
Architect Richardho Architects



Year 2021 - Ongoing
Site Former Malayan Motor Showroom, Midfilm House and tropical modern shophouses along Orchard Road (1920s – 30s)
Building Type Commercial terraced shophouses (Brick masonry/ timber/ RC/ steel)
Project Temasek Shophouse Extension
Scope

- Architectural heritage survey
- Conservation design guidance
- Heritage Interpretation plan
- Conservation technical specifications
- Construction stage specialist consultancy

Client Temasek Trust
Architect Surbana Jurong Consultants



Year 2021 - 2022
Site OCBC Centre (1976)
Building Type High Rise Commercial/ Office Building (RC/ steel/ structure)
Project Heritage Research Study
Scope

- Architectural research and heritage advisory

Client OCBC Properties Pte Ltd



Year 2021 - 2024
Site Former Lodging House at Maude Road (1926)
Building Type Commercial shophouse (Brick masonry/ RC/ Timber)
Project Adaptive reuse and conservation
Scope

- Architectural heritage survey
- Heritage interpretation plan
- Conservation technical specifications
- Construction stage specialist consultancy

Client Clifton Partners Pte Ltd
Architect Forum Architects



Year 2022
Site Former Tanglin Officers' Mess (1934)
Building Type Institutional (Shanghai plaster/ RC/ steel)
Project Heritage Advisory for Façade Restoration
Scope

- Architectural heritage survey (facades)
- Conservation recommendations
- Trial restoration consultancy

Client Ministry of Foreign Affairs Singapore



Year 2022 - 2023
Site Terraced Townhouse at Emerald Hill Road (1924)
Building Type Residential (Brick masonry/ timber)
Project Heritage Advisory for Architectural Restoration
Scope

- Architectural heritage and condition survey
- Conservation recommendations
- Construction stage specialist consultancy

Client Private Owner

* URA Architectural Heritage Award (Conservation) 2024



Year 2022 - Ongoing
Site Former Telok Ayer Market (1894)
Building Type Municipal Market (Cast iron structure)
Project Corporate rebranding campaign
Scope

- Architectural heritage research and survey
- Heritage interpretation & curatorial
- Architectural restoration consultancy

Client Fairprice Group
Architect Zarch Collaboratives

* National Monument



Year 2022 - Ongoing
Site Golden Mile Complex (1976)
Building Type Mixed Use (RC & steel structure/ fairfaced concrete/ tiled facades)
Project Conservation and Adaptive Reuse
Scope

- Architectural heritage survey
- Conservation design guidance
- Heritage interpretation plan
- Conservation technical specifications
- Construction stage specialist consultancy

Client Perennial Holdings
Architect Far East Organisation
 DP Architects



* National Monument

Year 2023 - Ongoing
Site **Sultan Mosque (1924)**
Building Type Indo-Saracenic religious building (partial brick masonry and RC structure)
Project Scope Architectural Restoration of National Monument
 • Architectural heritage research and survey
 • PSM Monuments Grant Application
 • Conservation technical specifications
 • Construction stage specialist consultancy
Client Masjid Sultan



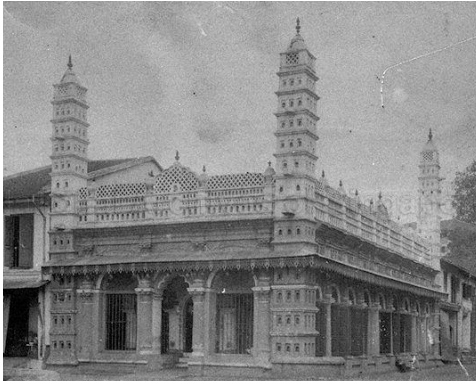
Year 2023 - Ongoing
Site **Terraced Townhouse at Neil Road (1897)**
Building Type Residential (Brick masonry/ timber)
Project Scope Heritage Advisory for Architectural Restoration
 • Architectural heritage and condition survey
 • Conservation recommendations
 • Construction stage specialist consultancy
Client Private Owner



Year 2023 - 2024
Site **Old Drill Shed at Old Police Academy (1927)**
Building Type Institutional (Steel structure)
Project Scope Feasibility Studies on Mount Pleasant Redevelopment
 • Architectural heritage survey
 • Building Condition Assessment
 • Conservation Strategies
Client Housing & Development Board



Year 2023
Site **Arcadia Condominium (1983)**
Building Type Residential (RC structure)
Project Scope Heritage Assessment of Arcadia Condominium
 • Architectural heritage survey
 • Conservation Management Plan
Client Arcadia MCST



* National Monument

<i>Year</i>	2023 - Ongoing
<i>Site</i>	Nagore Dargah Indian Muslim Heritage Centre (1928)
<i>Building Type</i>	Indo-Islamic religious building (brick masonry structure)
<i>Project</i>	Architectural Restoration of National Monument
<i>Scope</i>	<ul style="list-style-type: none"> • Architectural heritage research and survey • PSM Monuments Grant Application • Construction stage specialist consultancy
<i>Client</i>	ND Society



<i>Year</i>	2023 - Ongoing
<i>Site</i>	City Terminals
<i>Building Type</i>	Various (brick masonry, timber and RC structures)
<i>Project</i>	Heritage Research Study
<i>Scope</i>	<ul style="list-style-type: none"> • Architectural heritage research
<i>Client</i>	Urban Development Authority



<i>Year</i>	2023 – 2024
<i>Site</i>	Batu Gajah Hospital, Malaysia (1884)
<i>Building Type</i>	Medical (brick masonry/ timber structure)
<i>Project</i>	Architectural Conservation Specialist Consultancy
<i>Scope</i>	<ul style="list-style-type: none"> • Architectural Heritage Survey & Assessment • Heritage Management Plan
<i>Client</i>	ThinkCity and UEM Group
<i>Architect</i>	B.K.Ooi Akitek



* National Monument

<i>Year</i>	2023 - Ongoing
<i>Site</i>	Former Attorney General's Chambers (1906)
<i>Building Type</i>	Institutional (steel, RC and masonry structure)
<i>Project</i>	Architectural Restoration of National Monument
<i>Scope</i>	<ul style="list-style-type: none"> • Architectural Heritage Survey • Condition assessment and material investigation • Conservation & Maintenance Consultancy
<i>Client</i>	Parliament of Singapore



Year 2023 - Ongoing
Site **Former Armenian Street Substation (1928)**
Building Type Industrial – Infrastructure (brick masonry/ RC structure)
Project Redevelopment of 45 Armenian Street (fka The Substation)
Scope

- Architectural heritage survey
- Conservation design advisory
- Conservation technical specifications
- Construction stage specialist consultancy

Client National Arts Council Singapore
Architect Redbean Architects



Year 2023 - Ongoing
Site **Former Singapore Conference Hall & Trades Union House (1965)**
Building Type Civic - Cultural (RC structure)
Project Restoration works to 9 Shenton Way
Scope

- Architectural heritage survey
- Conservation design advisory
- Conservation technical specifications
- Construction stage specialist consultancy

Client Singapore Land Authority
Architect Zarch Collaboratives

* National Monument



Year 2023 - 2024
Site **Prima Flour Mill (1960s – 70s)**
Building Type Industrial (RC structure)
Project Architectural Conservation Specialist Consultancy
Scope

- Architectural research and heritage advisory

Client Mapletree Holdings Ltd



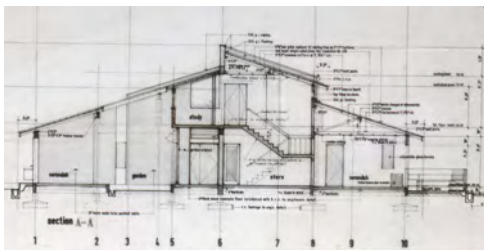
Year 2024 - Ongoing
Site **157 Neil Road (1890s)**
Building Type Residential - Cultural (brick masonry/ timber structure)
Project A&A Works to NUS Baba House
Scope

- Architectural Heritage Survey
- Conservation Management Plan

Client NUS Museum



Year 2024
Site Pickering Operations Complex (1984) & Former George Street Telephone Exchange (1954)
Building Type Infrastructural (RC structure)
Project Architectural Conservation Specialist Consultancy
Scope • Architectural research and heritage advisory
Client Singapore Telecommunications Ltd



Year 2024 - Ongoing
Site House at Binjai Park (1970s)
Building Type Residential (RC/ brick masonry/ timber structure)
Project Architectural Conservation Specialist Consultancy
Scope • Architectural Heritage Survey
 • Conservation Management Plan
Client Private Owner



Year 2024 - Ongoing
Site Former Bukit Timah Turf Club (1930s – 1980s)
Building Type Sports - Recreational (Steel/ RC/ timber structures)
Project CRL Turf City Station
Scope • Heritage Survey & Impact Assessment
 • Heritage Interpretation Plan
Client Land Transport Authority Singapore
Architect SAA Architects
Engineer AECOM

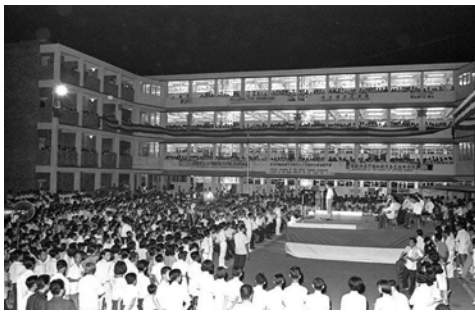


Year 2024 - Ongoing
Site Former Bukit Timah Turf Club Grandstands (1930s – 80s)
Building Type Sports - Recreational (Steel/ RC/ timber structures)
Project Structural Investigation & Schematic Design Studies
Scope • Architectural Heritage Survey
 • Conservation Design Advisory
Client Urban Redevelopment Authority
Architect Formwerkz Architects





Year 2024
Site Orchard Telephone Exchange (1970s)
Building Type Infrastructural (RC structure)
Project Architectural Conservation Specialist Consultancy
Scope • Architectural research and heritage advisory
Client Singapore Telecommunications Ltd



Year 2024 - Ongoing
Site Former Upper Thomson Secondary School (1966)
Building Type Education - Institutional (RC structure)
Project Architectural Conservation Specialist Consultancy
Scope • Architectural heritage survey
 • Conservation design advisory
 • Conservation technical specifications
 • Construction stage specialist consultancy
Client Guocoland Ltd
Architect ADDP Architects



Year 2024 - Ongoing
Site Former Gillman Barracks (1930s – 1970s)
Building Type Military (Steel/ RC/ timber structures)
Project Heritage Studies
Scope • Heritage Survey & Impact Assessment
 • Heritage Interpretation Plan
Client Housing Development Board



Year 2024 - Ongoing
Site Former Singapore Naval Base (1920s – 70s)
Building Type Military - Industrial (Steel/ RC structures)
Project Heritage Study
Scope • Heritage Research Study
Client Singapore Government