



PROFILE

Registered name	STUDIO LAPIS CONSERVATION PTE LTD
UEN	201415047E
Mailing address	7 Keppel Rd, #02-14/15, Tanjong Pagar Complex, Singapore 089053
Tel	(65) 6222 9640
Email	mail@studiolapis.sg
Website	www.studiolapis.sg

PARTNERS & DIRECTORS

HO Weng Hin

Architectural Restoration Specialist Consultant

Adjunct Senior Lecturer, NUS Dept of Architecture

Founding Exco Member, Docomomo Singapore Working Group-in-progress
Expert Voting Member, ICOMOS Scientific Committee for 20th Century Heritage
Founding Director, International Council on Monuments & Sites Singapore (ICOMOS Singapore)
Affiliate, Asian Academy for Heritage Management (UNESCO-ICCROM)
Specialista in Restauro dei Monumenti (cum laude) [University of Genoa, Italy]
Master of Architecture; Bachelor of Arts (Architectural Studies) [NUS]

TAN Kar Lin

Architectural Heritage Research Consultant

Founding Exco Member, Docomomo Singapore Working Group-in-progress
Founding Director, International Council on Monuments & Sites Singapore (ICOMOS Singapore)
Master of Arts (Architecture) degree by research [NUS]
Master of Architecture; Bachelor of Arts (Architectural Studies) [NUS]

OVERVIEW

STUDIO LAPIS is an award-winning architectural restoration and research consultancy based in Singapore. The founding partners Ho Weng Hin and Tan Kar Lin are trained in architecture at NUS. Weng Hin read his post-graduate conservation specialisation course at the *Università degli Studi di Genova*, Genoa, Italy, while Kar Lin completed a Masters of Arts (Architecture) degree by research.

SERVICES Studio Lapis undertakes full-scope architectural conservation consultancy as well as pre-conservation survey, tender consultancy, material-specific restoration, and laboratory test report evaluation. We specialise in historic architectural materials and construction systems, ensuring the appropriate and effective use of restoration techniques and conservation methods on fragile building fabric.

APPROACH Our conservation approach emphasizes thorough research and investigation on the historic building, including its constructional, historical, artistic, cultural, technological and material attributes. This establishes a solid knowledge base that informs decision-making and cost analysis in the complex process of architectural conservation. It enables consultants to make the best use of design opportunities in the historic edifice that may not be immediately apparent. We work closely with the client, architect, contractor and other consultants to conserve the materiality and character of historic architecture, ensuring the continuity of these unique qualities in the building's new lease of life.

RESEARCH The partners of Studio Lapis each has two decades of specialised research experience in architectural history, bringing to conservation projects their skills in archival research, investigation, and analysis. As part of the firm's ongoing research and development, the partners are working on a publication project on the early Modern Architecture of Singapore from the 1920s-1970s, covering extensive groundwork on colonial to independence period Modernist structures including Kallang Airport, Tanjong Pagar Railway Station, former Supreme Court, Singapore Conference Hall and so on.

HO WENG HIN

Architectural Conservation Specialist

Director, STUDIO LAPIS

Adjunct Senior Lecturer, NUS Dept of Architecture

Specialista in Restauro dei Monumenti (cum laude) [University of Genoa, Italy, 2008]

Master of Architecture [NUS, 2001];

Bachelor of Architectural Studies [NUS, 1998]

Nationality

Singapore Citizen

Email

howh@studiolapis.sg

Expertise

- Architectural restoration techniques
- Deterioration diagnostics of historic building materials
- Field survey and documentation of heritage sites
- Historic construction technology
- Conservation project planning & management
- Adaptive reuse architectural design
- Modern Architecture, Sites and Landscapes

Professional Membership & Public Service

- Member, Heritage and Identity Panel, Urban Redevelopment Authority (2018 – present)
- Founding Exco Member, Docomomo Singapore Working Group-in progress
- Expert Voting Member, ICOMOS International Scientific Committee for 20th Century Heritage
- Founding Director, ICOMOS Singapore; Member, AAHM
- Member, URA Architectural Heritage Awards Jury Panel (2009-2012)
- Member, URA Conservation Guidelines Review Panel (2010-15, 2017-2020 cycle)
- Member, MND Rail Corridor Partnership (2011- present)
- Member, Singapore Heritage Society (Exco Member 2004 – 2005)

Awards & Grants

2018	URA Architectural Heritage Award Special Mention – Sophia Hills Development
2017	UNESCO Asia Pacific Awards for Cultural Heritage Conservation (Honourable Mention) – Cathedral of the Good Shepherd
2017	URA Architectural Heritage Award for Restoration – Cathedral of the Good Shepherd
2016	URA Architectural Heritage Award for Restoration & Innovation – Capitol Development
2016	URA Architectural Heritage Award Special Mention – South Beach Development
2011	Mubin Sheppard Memorial Prize , Cycle 9 for "Conservation Area Study" category, awarded by Badan Warisan Malaysia (with NUS Dept of Architecture)
2011	Urban Redevelopment Authority of Singapore sponsorship for KTM Built Heritage Conservation Survey undertaken by Singapore Heritage Society (With Tan Kar Lin and Lim Chen Sian, for SHS)
2005, 2007	Italian Government Scholarship for postgraduate specialization course in architectural restoration at the Università degli Studi di Genova, Italy
2004	Urban Redevelopment Authority of Singapore Architecture and Urban Design Excellence Grant for book project <i>Our Modern Past: Modern Architecture in Singapore 1920s – 70s</i> , to be published by Singapore Heritage Society (With Dinesh Naidu and Tan Kar Lin, for SHS)
2004	Singapore International Foundation & Lee Foundation Grant for conference presentation at <i>VIIIth DOCOMOMO International Conference</i> , 26 th Sep – 2 Oct 2004; Columbia University, New York City (with Dinesh Naidu and Tan Kar Lin).
1996	Dean's List Award for outstanding academic performance, Faculty of Architecture, Building and Real Estate, National University of Singapore

Professional Experience

2013 – 2017, 2018 – present	Adjunct Senior Lecturer, Dept. of Architecture, National University of Singapore
2010 - 2012	Adjunct Lecturer, Dept. of Architecture, National University of Singapore
2009 - present	Partner & Director, Studio Lapis/ Studio Lapis Conservation Pte Ltd
2008 - 2009	Architectural Restoration Specialist Consultant
2004 - 2007	Editor, <i>Singapore Architect Journal</i>, Singapore Institute of Architects
2002 - 2003	Research Assistant, Department of Architecture, National University of Singapore
2000 - 2002	Editor, <i>Singapore Architect Journal</i>, Singapore Institute of Architects
2000 - 2001	Junior Research Assistant, Department of Architecture, National University of Singapore
1998 - 1999	Architectural Assistant, William Lim Associates Pte, Singapore.

Selected Projects

2019 – present	Architectural conservation specialist consultancy for National Museum of Singapore Feasibility Studies , for National Heritage Board
2019 – Ongoing	Architectural conservation specialist consultancy for former Kallang Airport and Hangar , for Singapore Land Authority
2019 – Ongoing	Architectural conservation specialist consultancy for Cairnhill Road Bungalow , for Low Keng Huat (Singapore) Ltd
2018 – Ongoing	Architectural conservation specialist consultancy for former Tanjong Pagar Railway Station , for Singapore Land Authority
2018 – Ongoing	Architectural conservation specialist consultancy for restoration of Church of St Teresa , for Church of St Teresa
2017 – Ongoing	Architectural conservation specialist consultancy for Additions & Alterations to Singapore Art Museum , for Ministry of Culture, Community and Youth
2017 – Ongoing	Architectural conservation specialist consultancy for State-owned historic properties , for Singapore Land Authority
2017 – Ongoing	Architectural conservation specialist consultancy for former St James Power Station , for Mapletree Holdings Ltd
2016 – 2019	Architectural conservation specialist consultancy for redevelopment former Traffic Police HQ (Maxwell Chambers Suites) , for Ministry of Law, Singapore.
2016 - Ongoing	Conservation and adaptive reuse specialist consultancy for Halic Tersane, Istanbul, Turkey , for Sembol-Ekopark İnşaat-Fine Otelcilik JV
2016 – 2018	Architectural conservation specialist consultancy for Yangon Central Railway Station Redevelopment RFP , for Yoma Strategic Holdings, Ltd. <i>Finalist Team:</i> Aedas – Arup Singapore – Ramboll Atelier Dreiseitl
2014 - Ongoing	Architectural conservation specialist consultancy and impact studies on historic buildings affected by Circle Line Stage 6 , for Land Transport Authority
2013 - 2019	Architectural conservation specialist consultancy for Raffles Hotel , for Katara Hospitality Ltd.
2013 - 2018	Architectural conservation specialist consultancy for former MGS Olson Building, Trinity Theological College Chapel, and Nan Hwa Girls' School, Singapore , for Hoi Hup Sunway Mount Sophia Pte. Ltd.
2013 - Ongoing	Architectural conservation specialist consultancy for former Myanmar Railways Building, Yangon, Myanmar , for Peninsula Yangon Ltd.
2012 - 2017	Architectural conservation specialist consultancy for Cathedral of the Good Shepherd, Singapore , for Cathedral of the Good Shepherd.
2011 - 2015	Architectural conservation specialist consultancy for Capitol Building, Theatre and Stamford House, Singapore , for Architects 61.
2009 - 2015	Architectural conservation of former military complex and NCO Club at Beach Road, Singapore (South Beach Development) , for South Beach Consortium Pte Ltd.
2008-09	Façade restoration (artificial stone) for the former Victoria School building (People's Association HQ Project) for Singapore Piling & Civil Engineering Pte Ltd.
2007-08	Documentation, Analysis and Conservation Guidelines for the Former Supreme Court Building Singapore (with School of Specialization in Restoration of Monuments, Genoa, submitted to MICA and PMB for use in National Art Gallery Project).

TAN KAR LIN

Architectural Heritage Research Specialist
Director, STUDIO LAPIS

Master of Arts (Architecture) [NUS, 2004]
Master of Architecture [NUS, 2001]
Bachelor of Architectural Studies [NUS, 1998]

Nationality Singapore Citizen
Email mail@studiolapis.sg

Expertise

- Archival research and analysis
- Colonial and modernist architectural heritage in Singapore
- Place history and urban culture
- Built heritage documentation and evaluation
- Adaptive reuse architectural design
- Modern Architecture, Sites and Landscapes

Professional Membership & Civil Society Involvement

- Founding Exco Member, Docomomo Singapore Working Group-in progress
- Founding Director, ICOMOS Singapore
- Member, Singapore Heritage Society (Exco Member 2004 – 2005)

Awards & Grants

2018	URA Architectural Heritage Award Special Mention – Sophia Hills Development
2017	UNESCO Asia Pacific Awards for Cultural Heritage Conservation (Honourable Mention) – Cathedral of the Good Shepherd
2017	URA Architectural Heritage Award for Restoration – Cathedral of the Good Shepherd
2016	URA Architectural Heritage Award for Restoration & Innovation – Capitol Development
2016	URA Architectural Heritage Award Special Mention – South Beach Development
2014	NHB Heritage Project Grant for book project <i>Our Modern Past: Modern Architecture in Singapore 1920s – 70s</i>
2004	URA Architecture and Urban Design Excellence Grant for book project <i>Our Modern Past: Modern Architecture in Singapore 1920s – 70s</i>
2002	National Heritage Board (Singapore) Research and Curatorial Grant for improvement of the National Archives Building Plans Collection.
2001-03	National University of Singapore Research Scholarship for MA(Arch) by Research degree at the Centre for Advanced Studies in Architecture, NUS.

Professional Experience

2009 - present	Partner & Director, Studio Lapis
2008-2009	Architectural Heritage Research Consultant
2004 - 2007	Editor & Chinese Editor, Singapore Architect Journal , Singapore Institute of Architects
2003	Teaching Assistant , Department of Architecture, National University of Singapore
2000 - 2002	Editor, Singapore Architect Journal , Singapore Institute of Architects
2000 - 2001	Junior Research Assistant , Department of Architecture, National University of Singapore
1998 - 1999	Architectural Assistant , Point Architects, Singapore.

Selected Projects

2020 – ongoing	Architectural conservation specialist consultancy for conserved bungalow at Mountbatten Road , for DSLSG Investment Co. Pte Ltd
2018 – Ongoing	Architectural conservation specialist consultancy for NHB Museums , for National Heritage Board
2017 – Ongoing	Chief Editor & Expert Contributor, Conservation Technical Handbook Series: A Guide to Best Practices , for Urban Redevelopment Authority & ICOMOS Singapore
2017 – Ongoing	Architectural conservation specialist consultancy for State-owned historic properties , for Singapore Land Authority
2016 - 2017	Research Study and Conservation Management Plan for Haw Par Villa , Singapore for National Heritage Board Singapore
2016 - Ongoing	Conservation and adaptive reuse specialist consultancy for Halic Tersane, Istanbul, Turkey , for Sembol-Ekopark İnşaat-Fine Otelcilik JV
2015	Architectural conservation specialist for Singapore Rail Corridor RFP , for Urban Redevelopment Authority Singapore <i>Finalist Team: Office of Metropolitan Architects – OLIN – DP Architects</i> <i>Finalist Team: MVRDV – Grant Associates – Architects 61</i>
2014 - Ongoing	Architectural conservation specialist consultancy and impact studies on historic buildings affected by infrastructural development , for Land Transport Authority
2013 - 2018	Architectural conservation specialist consultancy for former MGS Olson Building, Trinity Theological College Chapel, and Nan Hwa Girls' School , Singapore, for Hoi Hup Sunway Mount Sophia Pte. Ltd.
2013 - Ongoing	Architectural conservation specialist consultancy for former Myanmar Railways Building, Yangon, Myanmar , for Peninsula Yangon Ltd.
2012 - 2017	Architectural conservation specialist consultancy for Cathedral of the Good Shepherd, Singapore , for Cathedral of the Good Shepherd.
2011 - 2015	Historiography documentation of the restoration of Victoria Theatre and Victoria Concert Hall, Singapore , for MICA/ NAC
2011 - 2015	Architectural conservation specialist consultancy for Capitol Building, Theatre and Stamford House, Singapore (URA Land Sales redevelopment) , for Architects 61.
2011-12	Built heritage documentation and evaluation of Singapore railway landscapes, structures and artefacts , for Singapore Heritage Society, submitted to MND and URA.
2009 - 2015	Architectural conservation of former military complex and NCO Club at Beach Road, Singapore (South Beach Development) , for South Beach Consortium Pte Ltd.
2013	Author & Researcher, Architectural Monograph on Sonny Chan S Y.
2011-12	Built heritage documentation and evaluation of Singapore railway landscapes, structures and artefacts , for Singapore Heritage Society, submitted to MND and URA.
2009	Restoration cleaning of historic stelae at Hong San See Temple (National Monument) for Preservation of Monuments Board Singapore.
2005-07	Editor, Singapore Architect Journal #225 – 237 , Singapore Institute of Architects.
2004 - 2014	Author & Researcher (With Ho Weng Hin and Dinesh Naidu), Our Modern Past: Modern Architecture in Singapore 1920s – 70s , Singapore: Singapore Heritage Society, in 2 Vols.
2003-04	Building Plans Database for National Archives of Singapore , funded by National Heritage Board Research and Curatorial Grant (Awarded 2002).
2001-04	The 'Worlds' Entertainment Parks of Singapore (1920s-1980s): New Urban Form and Social Space for Culture and Consumption (Academic dissertation for MA(Arch) degree, NUS, Supervisor: Dr Wong Yunn Chii).

ARCHITECTURAL CONSERVATION PORTFOLIO



<i>Year</i>	2006
<i>Site</i>	Former Supreme Court (1939) & former City Hall (1928)
<i>Building Type</i>	Neo-classical institutional buildings (steel, RC and masonry structure)
<i>Project</i>	Initial Conservation Assessment for the National Art Gallery Project (Singapore) in collaboration with NUS Department of Architecture
<i>Scope</i>	State of conservation survey & report
<i>Client</i>	MICA Art Gallery Project Unit (AGPU)

* National Monuments



<i>Year</i>	2006 – 2007
<i>Site</i>	Former Church of S. Bartolomeo dell'Olivella, Genoa, Italy (14th C)
<i>Building Type</i>	Medieval religious building (masonry & timber structure)
<i>Project</i>	Architectural Conservation Survey and Adaptive Re-use Proposal
<i>Scope</i>	<ul style="list-style-type: none"> • Materials and deterioration assessment for natural stone, lime plaster, fresco painting, timber, iron, copper etc. • Non-invasive site investigation incl. IR thermography, magnetometry etc. • Material sampling and laboratory test analyses incl. petrographic-minerological analysis, SEM-EDS, FTIR
<i>Client</i>	Ministry of Cultural Assets, Ligurian Bureau, Italy (with the University of Genoa, Italy)



<i>Year</i>	2006 – 2008
<i>Site</i>	Former Supreme Court, Singapore (1939)
<i>Building Type</i>	Neoclassical institutional building (steel, RC & masonry structure)
<i>Project</i>	Specialisation Thesis submitted to MICA and PMB for use in NAG Project
<i>Scope</i>	<ul style="list-style-type: none"> • Architectural conservation documentation analysis & guidelines • Materials and deterioration assessment for artificial stone facades, terrazzo finishes, plasterwork, rubber tiling etc. • Material sampling and laboratory test analyses incl. petrographic-minerological analysis, SEM-EDS, FTIR, tests for soluble salts, carbonation of artificial stone finishes • Restoration specification and techniques for artificial stone and terrazzo

* National Monument



<i>Year</i>	2008 – 2009
<i>Site</i>	54 & 56 Heeren Street, Malacca, Malaysia (Late 18 C & 1930s)
<i>Building Type</i>	Dutch & British colonial terraced townhouses (masonry & timber structure)
<i>Project</i>	Architectural Conservation and Adaptive Re-use for NUS-DOA Tun Tan Cheng Lock Centre for Asian Built Heritage Research and Conservation
<i>Scope</i>	<ul style="list-style-type: none"> • Materials and deterioration assessment for brick masonry, lime plaster, mineral paintwork and metallic elements • Non-invasive site investigation incl. IR thermography
<i>Client/ Architect</i>	NUS Department of Architecture

* Restoration Project in UNESCO World Heritage Site



<i>Year</i>	2008 – 2009
<i>Site</i>	Former Victoria School, Singapore (1933)
<i>Building Type</i>	Art Deco/ Modernist institutional building (RC & masonry structure)
<i>Project</i>	Adaptive Re-use & New Extension for People's Association HQ
<i>Scope</i>	<ul style="list-style-type: none"> • Materials and deterioration assessment for artificial stone facades • Interpretation of laboratory test analyses incl. petrographic-minerological analysis, fluorescent microscopy • Conservation specifications, trial mock-ups and site supervision for restoration of artificial stone facades
<i>Client</i>	Singapore Piling and Engineering Pte Ltd
<i>Architect</i>	Architects 61 Pte Ltd

* Winner of URA Architectural Heritage Awards 2009



<i>Year</i>	2009
<i>Site</i>	Hong San See Temple, Singapore (1913)
<i>Building Type</i>	Southern Chinese religious building (<i>Minnan</i> traditional timber and stone structure)
<i>Project</i>	Restoration of National Monument
<i>Scope</i>	<ul style="list-style-type: none"> • Materials and deterioration assessment for natural stone stelae • Conservation specifications, trial mock-ups and restoration cleaning for natural stone stelae
<i>Client</i>	Preservation of Monuments Board, Singapore

* UNESCO Asia Pacific Awards for Cultural Heritage Conservation 2010 - Award of Excellence

	<i>Year</i>	2009
	<i>Site</i>	9 Units Conservation Shophouses, Joo Chiat, Singapore (1940s-50s)
	<i>Building Type</i>	Art Deco/ Modernist terraced shophouses (RC & masonry structure)
	<i>Project</i>	Heritage 9 Development (Adaptive Re-use and New Extension)
	<i>Scope</i>	<ul style="list-style-type: none"> • Materials and deterioration assessment for artificial stone facades • Conservation specifications, trial mock-ups and site supervision for restoration of artificial stone facades
<i>Client</i>		Soil-Build Pte Ltd
<i>Architect</i>		AGA Architects Pte Ltd



<i>Year</i>	2010, 2012
<i>Site</i>	157 Neil Road, Singapore (1890s)
<i>Building Type</i>	Peranakan terraced townhouse (loadbearing masonry and timber structure)
<i>Scope</i>	<ul style="list-style-type: none"> • Materials and deterioration assessment for lime plaster and ornamentation • Trial mock-ups, restoration cleaning, biocide treatment and consolidation of lime plaster and ornamentation
<i>Client</i>	NUS Museums, National University of Singapore



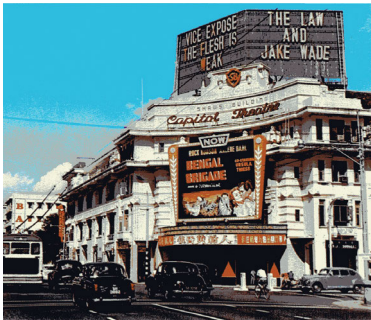
<i>Year</i>	2009 – 2011
<i>Site</i>	St. George's Church, Georgetown, Penang, Malaysia (1818)
<i>Building Type</i>	Georgian Neo-classical religious building (masonry & timber structure)
<i>Project</i>	Restoration of National Monument
<i>Scope</i>	<ul style="list-style-type: none"> • Architectural conservation documentation analysis & guidelines • Materials and deterioration assessment for brick masonry, lime plaster, paintwork, stone, terrazzo, timber and metallic finishes • Interpretation of laboratory test analyses incl. petrographic-minerological analysis • Restoration specification and techniques
<i>Client/ Architect</i>	East Design Architects Sdn Bhd

* National Monument (Malaysia) in UNESCO World Heritage Site



<i>Year</i>	2009 – 2015
<i>Site</i>	Former military complex & NCO Club at Beach Road, Singapore (1930s-50s)
<i>Building Type</i>	Modernist military/ institutional buildings (RC & masonry structure)
<i>Project Scope</i>	South Beach Development, Singapore <ul style="list-style-type: none"> • Architectural conservation documentation, analysis & guidelines • Architectural design review for conservation buildings • Materials and deterioration assessment for natural stone, brick masonry, terrazzo, steel, bronze, cast iron, ceramics, architectural glass, timber, plasterwork, paintwork etc. • Restoration specification and techniques • Construction stage specialist consultancy
<i>Client</i>	South Beach Consortium Pte Ltd
<i>Design Architect</i>	Foster and Partners (UK) Aedas Pte Ltd

*** URA Architectural Heritage Awards 2016 – Special Mention**

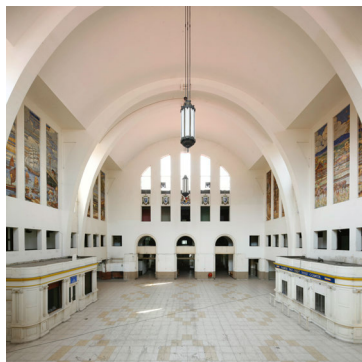


<i>Year</i>	2010
<i>Site</i>	Capitol Building & Theatre (1930); Stamford House (1906)
<i>Building Type</i>	Neoclassical recreational/ residential (RC/ steel/ timber structures)
<i>Project Scope</i>	URA Land Sales for redevelopment (Pre-bid stage) <ul style="list-style-type: none"> • Architectural conservation initial survey and assessment • Archival building plans and historical research
<i>Client</i>	Valparaiso Singapore Pte Ltd/ Gaw Capital
<i>Design Architect</i>	Herzog & de Meuron (Switzerland) Aedas Pte Ltd

*** One of three finalists in URA Land Sales Two-Envelope competitive bid**

<i>Year</i>	2011 – 2015
<i>Site</i>	Capitol Building & Theatre (1930); Stamford House (1906)
<i>Building Type</i>	Neoclassical recreational/ residential (RC/ steel/ timber structures)
<i>Project Scope</i>	URA Land Sales for redevelopment <ul style="list-style-type: none"> • Architectural conservation documentation, analysis & guidelines • Architectural design review for conservation buildings • Materials and deterioration assessment for natural stone, brick masonry, terrazzo, mild steel, cast iron, architectural glass, timber, plasterwork, paintwork etc. • Restoration specification and techniques • Construction stage specialist consultancy
<i>Client</i>	Architects 61 Pte Ltd
<i>Design Architect</i>	Richard Meier & Partners LLP (USA) Architects 61 Pte Ltd

*** URA Architectural Heritage Awards 2016 – Award for Restoration & Innovation**



<i>Year</i>	2011 – 2012
<i>Site</i>	Singapore railway land (former KTM railway) (1903-70s)
<i>Building Type</i>	Art Deco/ Modernist transport, infrastructure and ancillary buildings (RC & brick masonry structure)
<i>Project</i>	Singapore Railway Heritage Survey & Documentation (Rail Corridor Project)
<i>Scope</i>	<ul style="list-style-type: none"> • Built Heritage Survey of former train stations, engineering, residential and other structures • Photo-documentation and mapping of railway heritage landscapes, structures and artefacts
<i>Client</i>	Singapore Heritage Society

*** National Monument** (former Tanjong Pagar Railway Station)



<i>Year</i>	2012 – 2015
<i>Site</i>	Victoria Concert Hall and Theatre, Singapore (1905)
<i>Building Type</i>	Neo-classical institutional building (loadbearing masonry, steel and timber structure)
<i>Scope</i>	<ul style="list-style-type: none"> • Archival research and oral history • Construction and historiography documentation by videography and photography
<i>Client</i>	Ministry of Information, Communication and the Arts Singapore (MICA)
<i>Architect</i>	W Architects

*** National Monument**



<i>Year</i>	2012 – 2016
<i>Site</i>	Cathedral of the Good Shepherd, Singapore (1846)
<i>Building Type</i>	Neo-classical religious building (masonry & timber structure)
<i>Project</i>	Additions & Alterations to National Monument
<i>Scope</i>	<ul style="list-style-type: none"> • Archival research and conservation survey • Materials and deterioration assessment for brick masonry, lime plaster, paintwork, stone, timber and metal • Restoration specification and techniques • Construction stage specialist consultancy
<i>Client</i>	Cathedral of the Good Shepherd
<i>Architect</i>	Architects 61 Pte Ltd

*** UNESCO Asia Pacific Awards for Cultural Heritage Conservation 2017 - Honourable Mention**

*** URA Architectural Heritage Awards 2017 – Award for Restoration**



<i>Year</i>	2013 - ongoing
<i>Site</i>	Former Myanmar Railways Building, Yangon, Myanmar (1870s)
<i>Building Type</i>	Victorian-era institutional building (masonry & timber structure)
<i>Project</i>	The Peninsula Yangon/ Landmark Project
<i>Scope</i>	<ul style="list-style-type: none"> • Architectural heritage survey • Dilapidation and tactile survey for laterite and fair-faced brick masonry, timber and cast iron • Conservation design consultancy • Restoration specifications and techniques
<i>Client</i>	Prime Estate Developments Ltd. Hong Kong & Shanghai Hotels Ltd.
<i>Architect</i>	Aedas Pte Ltd

* Yangon Heritage Listed Building



<i>Year</i>	2013 - 2018
<i>Site</i>	Former MGS Olson Building (1928), Trinity Theological College Chapel (1968), Nan Hwa Girls' School (1941)
<i>Building Type</i>	Early modern institutional building, postwar modern church (masonry & RC structures)
<i>Project</i>	Mount Sophia development
<i>Scope</i>	<ul style="list-style-type: none"> • Architectural heritage survey • Architectural design review for conservation buildings • Materials and deterioration assessment for fairfaced brick masonry, clay tiles, mild steel, timber, terrazzo, precast RC elements, lime plaster, shanghai plaster, paintwork etc. • Restoration specification and techniques • Construction stage specialist consultancy
<i>Client</i>	Hoi Hup Sunway Mount Sophia Pte Ltd
<i>Architect</i>	Consortium 168 Pte Ltd

* URA Architectural Heritage Awards 2018 – Special Mention



<i>Year</i>	2013 - 2019
<i>Site</i>	Raffles Hotel (1889-1907) (Raffles Arcade - 1989)
<i>Building Type</i>	Hotel compound with buildings in various colonial revivalist styles (masonry & timber structure)
<i>Project</i>	Renovation Works to Raffles Hotel
<i>Scope</i>	<ul style="list-style-type: none"> • Architectural heritage survey • Architectural design review for conservation buildings • Materials and deterioration assessment for brick masonry, marble, lime plaster, glazed ceramic, cast iron, clay tiles, timber, paintwork etc. • Restoration specification and techniques • Construction stage specialist consultancy
<i>Client</i>	Beach Road Hotel (1886) Ltd
<i>Architect</i>	Aedas Pte Ltd

* National Monument



Year 2014
Site **Former Catholic High School (1951)**
Building Type Art Deco/ Modernist institutional building (RC structure)
Project Feasibility Studies on A&A to Singapore Art Museum
Scope

- Initial conservation site survey
- Architectural heritage research
- Conservation design review

Client National Heritage Board
Architect W Architects Pte Ltd



Year 2014 - 2018
Site **St George's Church (1911)**
Building Type Arts & Crafts movement religious building (fairfaced brick masonry structure)
Project Conservation Maintenance and Phased Restoration
Scope

- Condition assessment and materials investigation
- Long-term maintenance and restoration plan
- PSM Monuments Grant application
- Construction stage project management

Client St George's Church Council

*** National Monument**



Year 2014 - ongoing
Site **Southern Singapore**
Building Type Various (20th C. brick masonry, timber and RC structures)
Project Impact Studies on Historic Buildings Affected by Infrastructural Development including former Tg Pagar Railway Station
Scope

- Architectural Heritage Survey
- Building Condition Assessment
- Impact Study & Mitigation

Client Land Transport Authority

*** National Monument**



Year 2015
Site **Church of the Nativity of the Blessed Virgin Mary (1901)**
Building Type Neo-Gothic religious building (partial brick masonry and RC structure)
Project Architectural Restoration of National Monument
Scope

- Condition assessment and materials investigation
- Scope of restoration work
- PSM Monuments Grant application

Client Church of the Nativity of the Blessed Virgin Mary

*** National Monument**



Year 2016 - ongoing
Site **Halic Tersane, Istanbul, Turkey (1700s – 1980s)**
Building Type Brick, masonry, timber, RC and steel workplace buildings (Ottoman and Republic eras)
Project Scope Conservation & Mixed Use Redevelopment
• Conservation Design and Adaptive Reuse
• Initial Condition Assessment / Restoration Strategies
Client Designer Sembol-Ekopark İnşaat-Fine Otelcilik JV
 DP Architects Pte Ltd



Year 2016 - 2019
Site **Former Traffic Police HQ Building, Singapore (1930)**
Building Type Stripped Classicism/ institutional/ barracks - offices
Project Scope Maxwell Chambers Suites
• Architectural heritage survey
• Conservation design analysis and input
• Conservation technical specifications
• Construction stage specialist consultancy
Client Architect Ministry of Law, Singapore
 W Architects Pte Ltd



Year 2016 – 17
Site **Haw Par Villa, Singapore (1930s – 70s)**
Building Type Landscape gardens with structures, statuary and tableau
Project Scope Research Study on Haw Par Villa
• Archival and bibliographical research
• Field studies and materials testing
• Documentation and condition assessment
• Conservation Management Plan
Client National Heritage Board, Singapore



Year 2016 - ongoing
Site **Church of St Teresa (1929)**
Building Type Romano-Byzantine influenced religious building (RC Structure)
Project Scope Architectural Restoration of National Monument
• Architectural Heritage & Dilapidation Survey
• PSM Monuments Grant Application
• Conservation Design & Tender Stage
• Construction Stage Specialist Consultancy
Client Church of St Teresa

*** National Monument**



<i>Year</i>	2016 - 2018
<i>Site</i>	Ellison Building, Singapore (1925)
<i>Building Type</i>	Art Deco/ Shophouses (loadbearing masonry and timber structure)
<i>Project</i>	Conservation Study & Investigation Associated with Construction of North South Corridor
<i>Scope</i>	<ul style="list-style-type: none"> • Architectural heritage survey • Heritage impact assessment • Conservation technical specifications
<i>Client</i>	Land Transport Authority, Singapore
<i>Engineer</i>	Arup Singapore



<i>Year</i>	2017
<i>Site</i>	Ben Thanh Market, Ho Chi Minh City, Vietnam (1914)
<i>Building Type</i>	Fresh and dry goods market building (Ferroconcrete structure)
<i>Project</i>	Conservation & Redevelopment Concept Masterplan
<i>Scope</i>	• Architectural Heritage Survey Report
<i>Client</i>	Tien Phuoc Real Estate JSC
<i>Architect</i>	DP Architects Pte Ltd

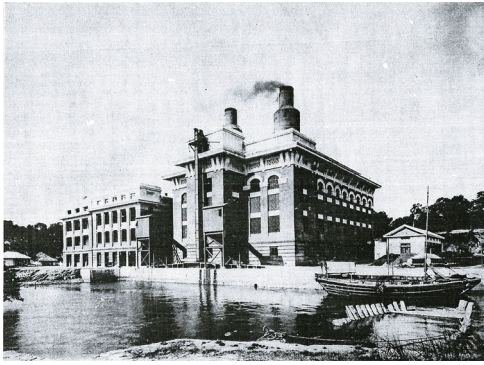


<i>Year</i>	2017 - Ongoing
<i>Site</i>	Historic State-owned properties in Singapore (1890s – 1950s)
<i>Building Type</i>	Former government bungalows and staff quarters (Brick masonry/ timber/ RC/ steel structures)
<i>Project</i>	Architectural Conservation Specialist Consultancy
<i>Scope</i>	<ul style="list-style-type: none"> • Built Heritage Survey & Assessment • Detailed Conservation Investigation • Conservation Management Plan
<i>Client</i>	Singapore Land Authority



<i>Year</i>	2017 - Ongoing
<i>Site</i>	Former St Josephs' Institution (1870s) & Catholic High School (1950s)
<i>Building Type</i>	Missionary school buildings adapted as contemporary art museums (Brick masonry/ RC structures)
<i>Project</i>	Additions & Alterations to Singapore Art Museum & 8Q SAM
<i>Scope</i>	<ul style="list-style-type: none"> • Architectural heritage survey • Conservation design analysis and input • Conservation technical specifications • Construction stage specialist consultancy
<i>Client</i>	Ministry of Culture, Community & Youth
<i>Architect</i>	SCDA Architects

* National Monument



Year 2017 - ongoing
Site **Former St James Power Station (1928)**
Building Type Industrial building (Steel structure and fairfaced brick facades)
Project Scope Redevelopment of St James Power Station
 • **Architectural heritage survey**
 • **Conservation design analysis and input**
 • **Conservation technical specifications**
 • **Construction stage specialist consultancy**
Client Mapletree Holdings Ltd
Architect W Architects Pte Ltd

*** National Monument**



Year 2018 - ongoing
Site **Former Beach Road Police Station, Singapore (1933)**
Building Type Police station/ offices and quarters (RC structure)
Project Scope Beach Road Mixed Development
 • **Architectural heritage survey**
 • **Conservation design analysis and input**
 • **Conservation technical specifications**
 • **Heritage interpretation**
 • **Construction stage specialist consultancy**
Client GuocoLand Ltd
Designer Denton Corker Marshall
Architect DP Architects



Year 2018 - ongoing
Site **Jiak Kim Street Godowns, Singapore (1910s-20s)**
Building Type Industrial buildings (Load-bearing brick masonry and timber structure)
Project Scope Jiak Kim Street Development
 • **Architectural heritage survey**
 • **Conservation design analysis and input**
 • **Conservation technical specifications**
 • **Heritage interpretation**
 • **Construction stage specialist consultancy**
Client Frasers Properties Ltd
Designer SCDA Architects Pte Ltd
Architect P&T Architects and Engineers Ltd



Year 2018 - ongoing
Site **12 Mount Sophia, Singapore (1893)**
Building Type Bungalow (Brick masonry/ timber/ structure)
Project Scope Handy Road Redevelopment
 • **Architectural heritage survey**
 • **Conservation design analysis and input**
 • **Conservation technical specifications**
 • **Heritage interpretation**
 • **Construction stage specialist consultancy**
Client CDL Regulus Pte Ltd
Architect Architects 61 Pte Ltd



<i>Year</i>	2018 - Ongoing
<i>Site</i>	Former Tanjong Pagar Railway Station (1930)
<i>Building Type</i>	Infrastructure/ railway terminus (RC structure, Shanghai Plaster facades)
<i>Project Scope</i>	Architectural Conservation Specialist Consultancy <ul style="list-style-type: none"> • Architectural Heritage Survey • Conservation Management Plan • Conservation technical specifications • Protection Works specialist consultancy
<i>Client</i>	Singapore Land Authority

* National Monument



<i>Year</i>	2018 - Ongoing
<i>Site</i>	Former Empress Place Building (1870s – 1920s) National Museum of Singapore (1880s – 1930s) Former Tao Nan School (1906) Former Istana Kampong Glam (1843) Sun Yat Sun Villa (1901)
<i>Building Type</i>	Institutional/ Museums (Brick masonry/ timber/ steel structures)
<i>Project Scope</i>	Architectural Conservation Specialist Consultancy <ul style="list-style-type: none"> • Architectural Heritage Survey • Conservation Management Plan • Preservation Guidelines Review
<i>Client</i>	National Heritage Board Singapore

* National Monuments



<i>Year</i>	2019 - ongoing
<i>Site</i>	67 Cairnhill Road, Singapore (1902)
<i>Building Type</i>	Bungalow (Brick masonry/ timber/ structure)
<i>Project Scope</i>	Cairnhill Road Condominium Development <ul style="list-style-type: none"> • Architectural heritage survey • Conservation design guidance • Conservation technical specifications • Heritage interpretation • Construction stage specialist consultancy
<i>Client</i>	Low Kheng Huat (S) Ltd
<i>Architect</i>	DP Architects Pte Ltd



<i>Year</i>	2019 - ongoing
<i>Site</i>	Former Kallang Airport and Hangars, Singapore (1937)
<i>Building Type</i>	Civic/ Industrial (Steel/ brick masonry structure)
<i>Project Scope</i>	Conservation and <ul style="list-style-type: none"> • Architectural heritage survey • Conservation design guidance • Conservation technical specifications • Construction stage specialist consultancy
<i>Client</i>	Singapore Land Authority
<i>Architect</i>	Zarch Collaboratives

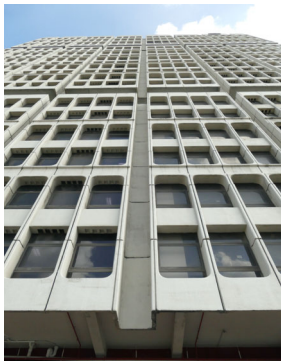


Year 2019 - Ongoing
Site **Shophouses at Stanley Street (1900s)**
Building Type Terraced shophouses (loadbearing masonry and timber structure)
Project Architectural Conservation Specialist Consultancy
Scope **• Architectural Heritage Survey**
• Conservation Technical Specifications
Client Taiko Properties Pte Ltd



Year 2019 - Ongoing
Site **National Museum of Singapore (1880s – 1930s)**
Building Type Institutional/ Museum (Brick masonry/ timber/ cast iron)
Project Feasibility Studies on A&A to National Museum of Singapore
Scope **• Initial conservation site survey**
• Architectural heritage research
• Conservation design review
Client National Heritage Board Singapore

* National Monument



Year 2020 - ongoing
Site **Shaw Tower (1977)**
Building Type Commercial Mixed Use (RC/ steel structure with precast concrete cladding)
Project Shaw Tower Heritage Studies
Scope **• Façade cladding technical study**
• Heritage Interpretation
• Urban Design guidelines
Client Shaw Foundation
Architect Aedas



Year 2020 - ongoing
Site **Mountbatten Road Bungalow (1930s)**
Building Type Residential (RC and timber structure)
Project Heritage Studies
Scope **• Architectural heritage survey**
• Heritage Interpretation
Client DSLSG Investment Co. Pte Ltd